



Heart to Heart

Special Fund Of
Shanghai Rende Foundation
上海仁德基金会心连心专项基金

ANNUAL REPORT

2022

2022 ANNUAL REPORT 年度报告

PREFACE 前言

Happy Year of the Rabbit!

The Year of the Tiger was a tough year. There is no way to deny it. It was hard on our volunteers and sponsors. It was also difficult for the children we sponsored for surgery. Nevertheless, it is now in the past and we are full of optimism for the Year of the Rabbit. But before we talk about the future, let's give a brief rundown on what happened in 2022. The best part – we made it through the year and were able to perform 181 heart surgeries despite COVID. Thus, although it was a painful year, it was successful in that we saved quite a few lives.

For our volunteers, 2022 was particularly distressing. By the beginning of the summer, we lost approximately 80% of our volunteers through movement out of Shanghai. For those who remained, it was difficult to take up where we had left off before the 2nd quarter lockdown. Due to COVID, events few and far between. Those that were scheduled were often canceled right beforehand. The playroom was only open a few days the whole year due to the threat of COVID affecting the hospitalized children. Assemblers were only able to attend sessions if they had had a negative COVID test the day before volunteering and were only able to be held for the last portion of the year. Field trips couldn't be scheduled. Paperwork doubled. It was a difficult adjustment for almost everyone, but we got through it.

Donations were down in 2022, but they did continue to come in despite everyone in Shanghai being focused on COVID. We also had problems with getting children into the hospital for surgery because travel was limited. Nevertheless, by the 3rd and 4th quarters, travel began to be easier and the children started coming in. We are hoping that in 2023 the children continue to come in quickly for surgery and that we have a record year.

Everyone associated with H2H in ANY capacity should be extremely proud of what you achieved in 2022. Thank you for staying with us through the difficult times. Nothing could have happened without your work, commitment, and donations. As a team – whether you are a volunteer, a sponsor, on the Board of Directors or a member



2022 ANNUAL REPORT 年度报告

of Rende Foundation – you changed everything for the 181 children we helped through heart surgery. Thank you for your generosity, selflessness, energy and commitment. You will be remembered by the children and their families as the people who changed everything for them. Your dedication to H2H is inspiring.

The Year of the Rabbit is traditionally a time for caution, empathy and the use of intellect. It seems a very fitting time for Heart to Heart volunteers and our partners to assess how we should move forward together to help as many of our young patients as we can. We want to save more lives and to do it in the smartest, easiest way possible. I hope you'll join us in striving to make Year of the Rabbit much better for Heart to Heart. Happy New Year!

Karen Carrington
Executive Director (Volunteer)

中文翻译:

兔年快乐!

毋庸置疑，虎年不仅对我们的志愿者和捐赠方是艰难的一年，对我们资助做手术的孩子亦是如此。好在这些已经成为过去，我们对兔年充满了期待！在展望新年之前，让我们简要回顾一下 2022 年。最振奋人心的是——尽管因为新冠疫情，我们遇到的困难重重，但还是完成了 181 例儿童心脏手术。因此，尽管这一年是艰苦的，但因为我们拯救了相当多的生命，它也算是成功的。

对于我们的志愿者团队来说，2022 年是非常痛苦的一年。在夏初，我们流失了大约 80% 的志愿者，他们永远的搬离了上海。那些留下来的志愿者也很难在第二季度的封控前完成手头的任务。由于疫情影响，全年的活动都非常少，一些活动在筹备中经常临时取消。因为新冠病毒对住院儿童有威胁，我们的儿童游戏室全年只开放了几天。后勤团队必须在志愿服务的前一天拿到阴性核酸报告，才能进入医院开展工作，并且也是快到年末才逐渐恢复。乡村回访无法进行，纸质工作量加倍了。这一年对几乎每一位志愿者都是一个艰难的自我调整，但我们熬过来了。

2022 ANNUAL REPORT 年度报告

捐款金额在 2022 年有所下降。尽管上海的每个人都在关注疫情状况，但持续有捐款流入。因为旅行受限，孩子来上海的医院做手术也是问题。然而，到了第三、四季度，旅行变得容易了，孩子们也开始陆续来上海。我们希望在 2023 年，等待手术的孩子能尽快接受手术，我们能再创新纪录。

每一位与仁德心连心专项基金有关的人，无论您担任何种职务，都应该为您在 2022 年取得的成就感到无比自豪。感谢您陪我们度过最困难的时期，没有您的辛勤劳动、无偿奉献和慷慨捐赠，这一切都不可能发生。作为一个团队——无论您是志愿者、捐赠方、董事会成员还是仁德基金会成员——您为我们通过资助心脏手术帮助到的 181 名儿童改变了一切，感谢您的慷慨、无私、精力和付出。孩子们和他们的家人都会记住您为他们所做的一切，您对心连心的贡献令人鼓舞。

从传统意义上讲，兔年意味着审慎行事、推己及人和善用智慧。对于我们志愿者和合作伙伴而言，现在是一个非常合宜的时机，去思索如何竭尽所能的服务那些年轻的患者。我们希望拯救更多的生命，并尽可能以最智慧、最有效的方式达成目标。我诚挚的希望您能和我们共同努力，让心连心的兔年过得更好！祝大家兔年健康、快乐！

凯伦 Karen Carrington

执行总监(志愿者)

2022 ANNUAL REPORT 年度报告

TABLE OF CONTENTS 目录

Preface 前言	1
Table of Contents 目录	4
Heart to Heart's Mission 上海心连心的目标	5
2022 Sponsored Children 2022 年资助的孩子	6
Rural School Library Project 乡村学校图书馆捐赠项目	15
Rural School Sports Package Project 乡村学校运动包捐赠项目	16
2022 Sponsors 2022 年重要资助方	17
H2H Volunteer Teams 心连心志愿团队介绍	19
Contact Us 联络我们	20
Rende Foundation 上海仁德基金会	21

2022 ANNUAL REPORT 年度报告

HEART TO HEART'S MISSION 上海心连心的目标

Life-saving, life-changing and life-enhancing

挽救生命 改变命运

Heart to Heart is a special fund of Ren De Foundation. We are Shanghai based, but provide corrective surgery for Chinese children from all over China with congenital heart disease (CHD) whose parents are unable to afford the surgery. To date H2H has sponsored over 2,417 children for heart surgery. The surgeries not only saved their lives, but transformed the lives of their families.

上海心连心是在上海仁德基金会设立的专项基金，致力于资助中国困境家庭的先天性心脏病患儿进行手术治疗。截至目前，上海心连心已帮助 2,417 名患儿筹集善款完成了治疗。这些手术不仅挽救了一条条幼小的生命，更是改变了一个个家庭的命运。

Heart to Heart is proud of the fact that we are and always have been a 100% volunteer organization. We have no paid employees. We also have a \$0 operating budget which means that 100% of donations are spent for surgeries. Sponsors are given documentation on where their donations were spent and can also visit the children while the children are in the hospital for their surgery. Sponsoring a child is a truly moving experience.

自成立以来，上海心连心始终坚持 100%由志愿者管理运营，无任何雇员。零成本的运营意味着每一笔捐赠都 100%用于资助手术费用。我们为捐款人提供所捐款项的支出明细，并提供前往医院看望患儿的所需协助。每一个为这些孩子付出的善举都让我们备受感动。

Our mission is to provide support and financial assistance to low income Chinese children who require heart surgery and to provide financial assistance to rural Chinese schools which require libraries, sports equipment and other essentials. For more information visit our website at www.h2hsh.com.

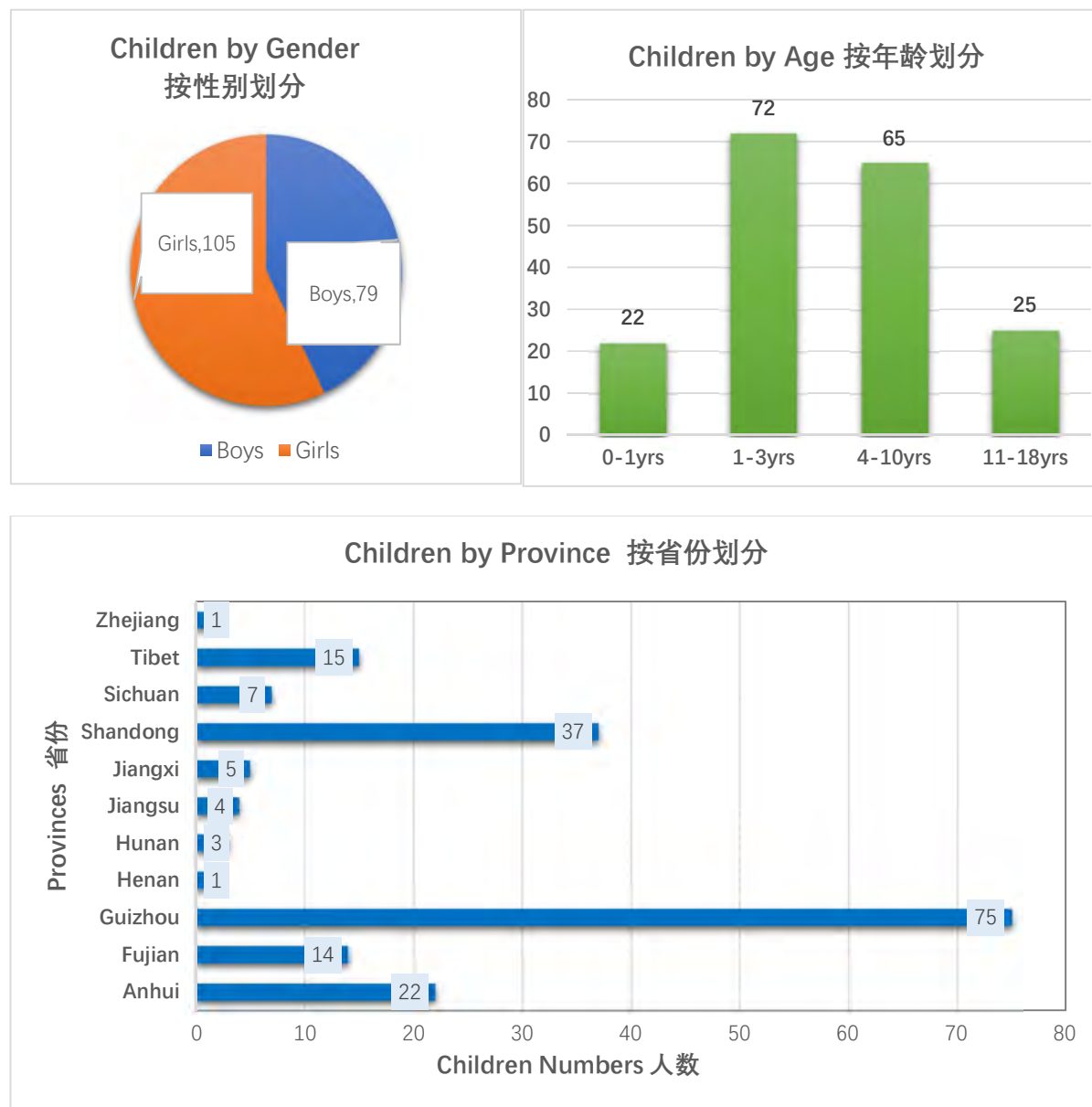
我们的使命是向需要心脏手术的中国低收入家庭儿童提供支持和财政援助，并向需要图书馆、运动器材和其他必需品的乡村学校提供财政援助。欲了解更多信息，请访问心连心网站 www.h2hsh.com。



Heart to Heart
Special Fund Of
Shanghai Ren De Foundation
上海仁德基金会心连心专项基金

2022 ANNUAL REPORT 年度报告

2022 SPONSORED CHILDREN ANALYSIS 2022 年资助孩子情况分析



2022 ANNUAL REPORT 年度报告

2022 SPONSORED CHILDREN'S NAME LIST 2022 年心连心资助孩子名单

Meet the Heart to Heart children sponsored in 2022 – each and every one will always remain in our hearts:

2022 年心连心遇见的孩子们 —— 每个孩子都会永远留在我们心中：

No.	H2H#	Name	Gender	Age	Diagnosis	Province
1	2006	Yu Xiuxiu	G	4	右室双出口	Shandong
2	2008	Li Jingyi	G	13	VSD	Guizhou
3	2022	Zhang Yifan	G	8m	TOF	Shandong
4	2047	Li Shuying	G	8	VSD/PDA	Shandong
5	2048	Chen Liyi	G	3	ASD	Guizhou
6	2051	He Xinxin	B	7	ASD	Hunan
7	2065	Zhao Zhihuang	B	17	TOF	Guizhou
8	2067	Wang Zikuo	B	7m	VSD	Shandong
9	2073	Luo Shihan	G	10	ASD	Shandong
10	2078	Zhang Yurui	G	16	TOF	Jiangsu
11	2088	Tang Chengkun	B	3	VSD	Guizhou
12	2097	Zhang Siyan	G	4	ASD/PDA	Guizhou
13	2102	Dunzhu Ciren	M	12	PDA	Tibet
14	2113	Fu Ziqi	G	14m	ASD	Anhui
15	2114	Cheng Tianyi	G	21m	PDA	Jiangsu
16	2125	Meng Xiaoxiao	G	2Y	ASD.VSD	Guizhou
17	2132	Pan Lixian	G	8	ASD	Guizhou
18	2134	Zou Rongze	B	2	ASD	Sichuan
19	2135	Xiong Tianyuan	B	5m	VSD	Guizhou
20	2141	Bao Yiyi	G	8	VSD	Anhui



2022 ANNUAL REPORT 年度报告

21	2176	Nima Zhuoga	F	10	PDA	Tibet
22	2189	Yang Haoran	B	8	TOF	Sichuan
23	2194	Zhaxi Ciji	F	3	PDA	Tibet
24	2195	Lunzhu Cicuo	M	8	PFO,ASD	Tibet
25	2196	Baima Qunpei	M	7	ASD	Tibet
26	2197	Nan Gongcuo	F	4	ASD,PDA	Tibet
27	2199	Zou Yuyao	G	18m	VSD	Guizhou
28	2200	Wen Xuerui	B	9	ASD5	Guizhou
29	2206	You Yinpin	G	9	卵圆孔未闭	Guizhou
30	2209	Hua Xinyu	G	7	ASD	Shandong
31	2220	Yang Xiule	B	11m	ASD、VSD	Guizhou
32	2223	Yang Xingsheng	B	18m	VSD	Guizhou
33	2232	Ge Zong	F	8	PDA	Tibet
34	2233	De Qu	F	15	PDA	Tibet
35	2234	Luosang Ciren	M	13	Mitral valve plasty + PDA	Tibet
36	2235	Sawa Sida	F	9	PDA	Tibet
37	2236	Ge Ji	F	8	PDA	Tibet
38	2237	Bai Mayuzhen	G	11	ASD	Tibet
39	2238	Zhang Qianqian	G	2	VSD5	Guizhou
40	2240	Mou Rouyi	G	8	ASD	Fujian
41	2241	Long Zhiyun	G	5	VSD	Guizhou
42	2242	Ri Bacuo	F	5	PDA	Tibet
43	2243	Gesang Lamu	F	15	PDA	Tibet
44	2244	Lu Weihang	G	4	TOF	Fujian
45	2245	Yang Jingqi	G	3	VSD	Shandong



2022 ANNUAL REPORT 年度报告

46	2246	Li Xinjian	B	2	VSD	Shandong
47	2247	Zhao Ruixi	G	9m	TOF	Shandong
48	2248	Suolang Bajue	M	13	PDA	Tibet
49	2249	Xiao Yuxuan	G	19m	VSD	Hunan
50	2250	Wang Wenjiang	B	13	V6.5	Guizhou
51	2251	Liu Jiakuan	G	19m	VSD	Guizhou
52	2253	Sun Hengbao	B	15	ASD	Anhui
53	2254	Wang Mengchu	G	6m	VSD	Shandong
54	2256	Yang Qiuyan	G	4	VSD5	Guizhou
55	2257	Shen Haotian	B	6	ASD	Anhui
56	2258	Chen Huirong	G	21m	ASD\PS	Guizhou
57	2259	Wang Pengcheng	B	3	VSD	Anhui
58	2260	Long Shiqi	G	2	VSD	Guizhou
59	2261	Long Hongxuan	B	22m	TOF	Guizhou
60	2262	Ji Zihe	B	11m	ASD	Anhui
61	2263	Qin Yumo	G	5	Chamber Miissing	Anhui
62	2264	Huang Zitao	B	12m	ASD/VSD	Fujian
63	2265	Sun Shiqi	G	6	ASD	Jiangsu
64	2266	Zhang Yifan	B	3	VSD	Shandong
65	2267	Xie Shili	G	5	VSD	Guizhou
66	2268	Yu Wenxuan	B	4	VSD	Sichuan
67	2269	Zhou Yuchen	B	10	ASD	Sichuan
68	2270	Yang Chenlin	B	13m	ASD	Sichuan
69	2271	Bai Ruru	G	5	VSD	Guizhou
70	2272	Chen Gang	B	3	VSD	Guizhou



2022 ANNUAL REPORT 年度报告

71	2273	Yang Bo	B	13m	VSD	Guizhou
72	2274	Long Shurui	B	3	ASD、VSD	Guizhou
73	2275	Wu Tenghui	B	4	VSD, PDA	Guizhou
74	2276	Xie Yushu	G	9m	VSD	Shandong
75	2277	Tang Xinyu	G	4	VSD	Guizhou
76	2278	Wen Shishi	G	8	VSD12	Guizhou
77	2279	Wu Haixin	B	13	PFO	Fujian
78	2282	Zhao Chenpeng	B	3	VSD	Shandong
79	2283	Shen Yusen	B	2	VSD	Shandong
80	2284	Zhang Zimeng	G	13m	ASD	Shandong
81	2285	Yang Guanglan	G	10	ASD	Guizhou
82	2288	Liu Jicheng	B	10	VSD	Shandong
83	2289	Yang Meiqi	G	4	VSD\ASD	Guizhou
84	2290	Wang Dongsheng	B	12	ASD	Jiangxi
85	2293	Xu Lin	B	21m	ASD	Shandong
86	2294	Liu Enshuo	B	2	VSD	Shandong
87	2295	Guo Shuya	G	2	ASD	Shandong
88	2296	Wang Yisu	G	13m	PS	Shandong
89	2297	Yang Xiruiying	G	3	VSD	Guizhou
90	2298	Su Yan	G	15m	ASD	Anhui
91	2299	Tang Xuejing	G	8	ASD	Guizhou
92	2300	Zhang Wanru	G	2	VSD	Shandong
93	2301	Guo Jingwen	G	5	complex	Shandong
94	2302	Zhang Dengqin	G	14	Endocardial pad defects	Guizhou
95	2303	Zhou Wuheng	B	2	肺动脉中度狭窄 术后	Guizhou



2022 ANNUAL REPORT 年度报告

96	2304	Wei Shishi	G	4	VSD	Guizhou
97	2305	Chen Zhushan	G	3	ASD,肺动脉轻度狭窄	Guizhou
98	2306	Luo Jiayu	B	2	PS 中度	Guizhou
99	2307	Zhang Haoyang	B	4	VSD	Sichuan
100	2308	Wang Zhengda	B	2	PS	Henan
101	2309	Guo Jinxi	G	2	VSD	Sichuan
102	2310	Yang Yixin	G	2	VSD+ASD	Guizhou
103	2311	Long Jiajia	G	4	VSD4	Guizhou
104	2312	Luo Yaxuan	G	22m	PS	Guizhou
105	2314	Nong Feng'ao	B	7	ASD	Guizhou
106	2315	Huang Chaoyonghao	B	18m	VSD	Guizhou
107	2316	Wang Zhicheng	B	4	VSD	Guizhou
108	2317	Shi Haoran	B	3	complex	Anhui
109	2318	Liu Zining	G	18m	ASD	Anhui
110	2319	Zhang Zicheng	G	18m	ASD	Jiangsu
111	2320	Wei Lai	B	7	VSD	Fujian
112	2321	Niu Xitong	B	15m	VSD	Zhejiang
113	2322	Du Jinghui	G	15	PDA	Shandong
114	2323	He Qinqingyan	G	3	ASD	Guizhou
115	2324	Luo Xixi	G	6m	VSD.PDA.GOA	Guizhou
116	2326	Liu Shuheng	B	1	VSD	Fujian
117	2327	Ruan Chenjing	B	10	二尖瓣关闭不全	Guizhou
118	2328	Xu Xuan	B	5	VSD	Guizhou
119	2330	Yang Ruomo	G	12m	PDA	Guizhou
120	2331	Men Anna	G	9	A3V10/PH	Guizhou



Heart to Heart
Special Fund Of
Shanghai Renze Foundation
上海仁德基金会爱心专项基金

2022 ANNUAL REPORT 年度报告

121	2332	Lei Xinrui	G	2	V4	Guizhou
122	2333	Liu Zeming	B	14	VSD	Fujian
123	2334	Wen Lirun	B	3	VSD	Fujian
124	2336	Cao Nuoyi	B	2	VSD	Anhui
125	2337	He Jingyi	B	18m	VSD	Hunan
126	2338	Jiang Fangyan	G	14m	VSD	Guizhou
127	2339	Hu Baodan	G	8	VSD	Fujian
128	2340	Liu Yuhang	B	3	PDA6	Guizhou
129	2341	Li Fuyun	B	8	V4	Guizhou
130	2342	Yang Xiao	G	17m	VSD5	Guizhou
131	2343	Li Xirui	G	15m	ASD/VSD/PDA	Guizhou
132	2344	Cheng Wenyang	G	14	VSD10/PH	Guizhou
133	2350	Liu Haoqi	G	7	TOF+TR	Shandong
134	2351	Yang Zihao	B	3	VSD6	Guizhou
135	2355	Tang Yixin	G	15m	ASD/VSD	Jiangxi
136	2356	Huang Taijun	B	15m	ASD,PS	Guizhou
137	2359	Du Ning	G	13	VSD	Shandong
138	2360	Li Jiayan	G	8	ASD	Guizhou
139	2363	Wang Haoran	B	13	格林术后	Shandong
140	2367	Wei Zhiyuan	B	6	VSD	Shandong
141	2368	Yang Zixiao	B	4	ASD	Shandong
142	2371	Yuan Qianyu	G	2	VSD	Anhui
143	2373	Liu Xintong	G	3	VSD	Shandong
144	2374	Wei Shiya	G	2	ASD,主动脉缩窄	Guizhou
145	2376	Li Jimei	G	6	ASD6	Guizhou



2022 ANNUAL REPORT 年度报告

146	2377	Fu Ruoxuan	G	2	PDA	Anhui
147	2378	Tu Youyi	B	2	VSD	Anhui
148	2379	Chen Qian	B	8	PDA	Fujian
149	2381	Cao Chengxin	G	3	VSD	Anhui
150	2382	Zhang Zixuan	B	6	VSD	Jiangxi
151	2383	Chen Qingfu	B	9	ASD	Guizhou
152	2385	Gu Changyu	B	6	F4/TOF	Guizhou
153	2386	Luo Na	G	6	ASD	Guizhou
154	2389	Xu Yixiao	B	14m	VSD	Anhui
155	2391	Zang Yinuo	G	3	ASD	Anhui
156	2392	Xiao Yibo	B	15m	VSD	Anhui
157	2393	Huang Yaqi	G	23m	Severe TOF	Shandong
158	2397	Su Changqi	B	9	PDA	Fujian
159	2398	Liu Xiaoman	G	11m	VSD	Shandong
160	2399	Li Xin	G	12	ASD	Shandong
161	2401	Luo Zihao	B	5m	TOF	Guizhou
162	2411	Ren Xinyi	G	3	VSD	Shandong
163	2412	Xiang Yue	G	3	VSD	Guizhou
164	2415	Yang Renbo	B	12	ASD	Guizhou
165	2419	Feng Tingkan	B	4	ASD	Guizhou
166	2420	Huang Yixuan	G	7	VSD	Jiangxi
167	2421	Zhu Zichen	G	9	VSD	Fujian
168	2422	Yang Xiulin	G	12	PDA	Guizhou
169	2431	Ye Sirui	B	7m	VSD	Anhui
170	2432	Wu Tian'ai	G	6	ASD	Guizhou
171	2439	Si Nian	G	7m	TOF	Shandong



Heart to Heart
Special Fund Of
Shanghai Renze Foundation
上海仁德基金会爱心专项基金

2022 ANNUAL REPORT 年度报告

172	2445	Lian Xinru	G	10	VSD	Shandong
173	2448	Wu Shouzhong	B	16	ASD	Guizhou
174	2449	Yang Tianfu	B	3m	VSD	Guizhou
175	2450	Huang Yufei	G	11m	VSD+TR	Anhui
176	2468	Gan Chenyang	B	5m	VSD	Guizhou
177	2471	Song Yueyang	G	2	See notes	Anhui
178	2473	Fang Guoqing	B	13	Green's Post Op	Jiangxi
179	2504	Hao Ziyu	G	18m	VSD	Shandong
180	2505	Yan Xuwen	G	2	VSD	Shandong
181	2506	Yang Ziyi	G	17m	VSD	Guizhou
182	2507	Liu Yating	G	3	ASD	Anhui
183	2508	Wen Xinyi	G	11	PDA	Fujian
184	2560	Zhang Jinghao	B	4m	ASF+VSD+PS	Fujian



Heart to Heart
Special Fund Of
Shanghai Rendu Foundation
上海仁德基金会爱心专项基金

2022 ANNUAL REPORT 年度报告

H2H RURAL SCHOOL LIBRARY PROGRAM 心连心乡村学校图书馆捐赠项目

Our rural school library program was initiated in 2006. Although heart surgeries have always been our primary focus, early visits to our sponsored children's rural homes, villages, and schools made us aware of their very basic living and educational environments. Most books and educational aids were either old or non-existent. Discussions with headmasters and local educational officials revealed that little was available to the schools for supplementary library books. We established that RMB 20,000 would purchase a large selection of curriculum supporting reference and library books. We also found it would be most appropriate and cost effective if the headmasters selected and purchased the books needed on credit with a regional supplier. Heart to Heart would then pay the supplier during/after the library dedication ceremony.

Although conditions at schools have changed for the better over the years, rural primary schools still need books that encourage children to read and give them a sense of the outside world. Computers are also needed. Thus, the program has continued to be very popular both with the schools themselves and our donors who wish to promote education. As of 2022 December Heart to Heart has sponsored 156 rural school libraries in Anhui, Guizhou, Henan, Hunan, Jiangsu, Jiangxi, Shandong and Zhejiang provinces.

Our rural school library program was severely impacted in 2022. We were not able to make trip to the countryside to donate school libraries. We hope to be able to make more trips and donations in 2023.

心连心乡村学校图书馆项目始于 2006 年。虽然心脏病手术的资助一直是我们的重点，但在访问过赞助患儿所在的乡村家庭、村庄、学校之后，我们对他们的生活和教育环境有了更多了解。我们发现大多数的少儿图书及辅助教育设施是老旧甚至缺失的。通过和当地学校的校长及教育官员的沟通，我们了解到只有很少的能够被用于当地学校图书馆的书籍采购。我们计算后发现，两万元即可帮助学校购入大量的教辅书及课外读物。另外，由校长亲自挑选图书并向当地供应商购买图书是最合适、最经济实惠的方式。

虽然近年来学校的情况得到一定改善，但乡村小学依然需要更多图书来鼓励孩子们阅读，帮助他们了解外面的世界。并且，电脑设备也是短缺的。因此，心连心的这个项目对乡村学校以及希望促进教育的捐助者们来说都是很重要的。截止 2022 年 12 月，心连心已经赞助了 156 所位于安徽、贵州、河南、湖南、江苏、江西、山东和浙江等地的乡村学校图书馆。

我们的乡村图书馆项目在 2022 年受到了严重的影响。我们的志愿者没能下乡回访进行图书赞助，希望 2023 年我们可以增加回访及捐赠的次数。



Heart to Heart
Special Fund Of
Shanghai Renze Foundation
上海仁德基金会心连心专项基金

2022 ANNUAL REPORT 年度报告

RURAL SCHOOL SPORTS EQUIPMENT PACKAGE PROGRAM

心连心乡村学校运动包捐赠项目

Our rural school sports equipment package program was initiated in 2019. While talking with headmasters and students about what their schools need besides libraries, we found that most are trying to develop their athletics programs as well. Chinese students are renowned for their dedication to studying, but it seems that more and more children are out of shape because they don't get enough exercise. This is true in the cities and countryside alike. The government is building tracks and other things to help the schools, but most schools also want more practical things to make exercise attractive to students - ping pong tables, badminton sets, footballs, jump ropes, etc. These are easily purchased and are very cheap for the schools to order. We've found that RMB 5,000 covers a wide variety of things they need.

As of 2022 December 31, Heart to Heart has sponsored 16 rural school sports packages in primary schools in Anhui, Hunan, Jiangsu, Jiangxi and Shandong.

Our rural school sports equipment package program was severely impacted in 2022. We were not able to make trip to the countryside to donate school sports packages. We hope to be able to make more trips and donations in 2023.

心连心乡村学校运动包捐赠项目开始于 2019 年。当我们和乡村学校校长以及学生们谈起除图书馆以外，学校还需要什么支持时，大部分学校反馈他们都在努力发展体育项目。中国学生对待学习的努力认真是全世界都出了名的，但似乎越来越多的孩子由于没有得到足够的体育锻炼而身体状况也不佳，这一情况在城市和乡村都是很相似的。政府会修建跑道等设施来支援学校，但大部分学校也希望有更多实用的东西来吸引孩子们进行运动锻炼，如乒乓球桌、羽毛球套装、足球、跳绳等。它们很容易被购买，并且也很便宜。五千元人民币就可以帮助一所乡村学校采购到大量的运动器材。

截至 2022 年 12 月 31 日，心连心已资助了安徽、湖南、江苏、江西、山东等地的 16 所乡村小学的运动设施。

我们的乡村学校运动包捐赠项目在 2022 年受到了严重的影响。我们的志愿者没能前往乡村学校开展运动包捐赠项目，希望 2023 年我们可以增加回访及捐赠的次数。

2022 SPONSORS 2022 年主要捐助者



2022 ANNUAL REPORT 年度报告

Heart to Heart is very grateful to all of our donors no matter what they gave us – in-kind goods or monetary donations. All are special and all helped us achieve the amazing 2022 results. We would particularly like to thank the following donors, however, for your incredible support in 2022.

衷心感谢我们所有的捐助者，无论他们捐了什么——物品或是资金。所有的慷慨捐赠都是非常特别的，都帮助我们在 2022 年取得了令人惊叹的成绩。在此，我们要特别感谢以下捐助者，感谢他们在 2022 年给予的大力支持！

DONATIONS MORE THAN RMB 400,000 / 捐赠 40 万以上

- Texas Instruments 德州仪器半导体技术(上海)有限公司

DONATIONS BETWEEN 300,000 – 399,999 / 捐赠 30-40 万之间

- Karen's 2021 H2H China 5,000 Km Challenge

DONATIONS BETWEEN 200,000 – 299,999 / 捐赠 20-30 万之间

- Baillie Gifford Investment Management Shanghai 柏基投资管理（上海）有限公司
- GAP 盖璞（上海）商业有限公司
- Apple employees
- 浙江金亚泰休闲用品有限公司

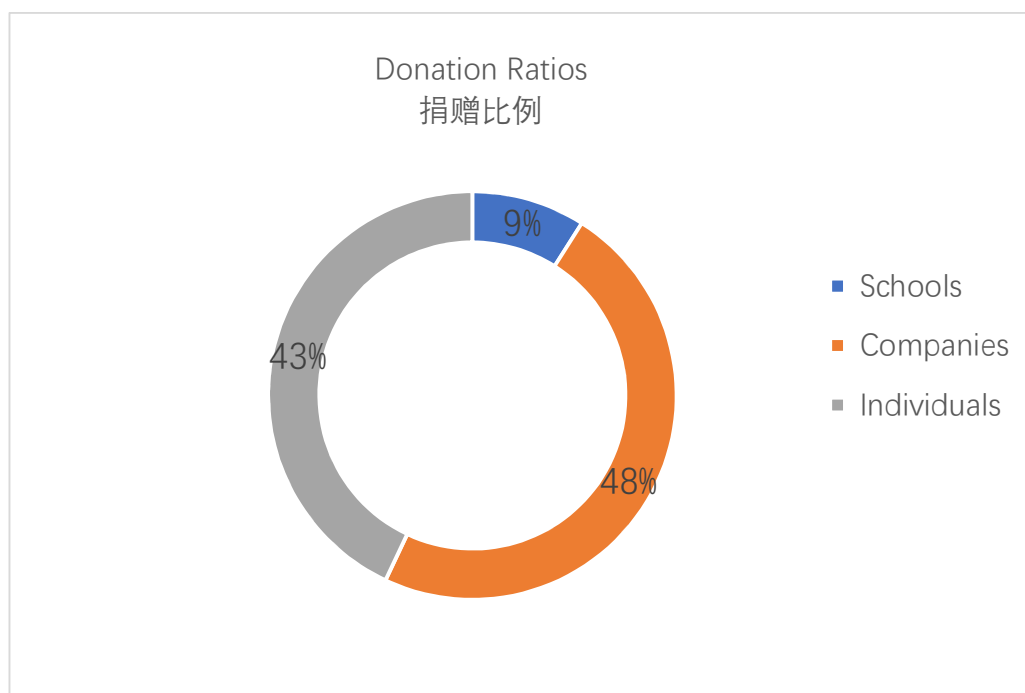
DONATIONS BETWEEN 100,000 – 199,999 / 捐赠 10-20 万之间

- ECNUAK 上海华东师范附属双语幼儿园
- Sarah Klein
- Oliver Wyman employees
- Diana Chen
- Consul General Charity Tennis Tournament - 泊玛贸易（上海）有限公司
- Europlacer (Intl) Ltd.



2022 ANNUAL REPORT 年度报告

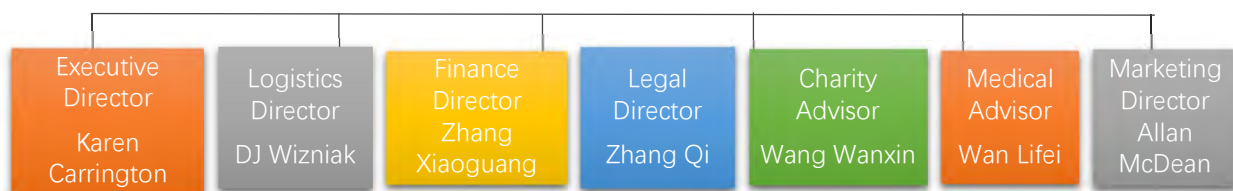
Donation Ratios: 捐赠比例



2022 ANNUAL REPORT 年度报告

HEART TO HEART VOLUNTEER TEAMS 上海心连心志愿服务团队

Heart to Heart Board of Directors 心连心董事会成员



2022 ANNUAL REPORT 年度报告

CONTACT US 我们的联系方式

Contact us 联系方式:

General Information 基本信息 : info@h2hsh.net

Events 活动及项目筹划 : events@h2hsh.net

Finance 财务: finance@h2hsh.net

Group Volunteering 团体志愿服务 : groupvolunteers@h2hsh.net

In-Kind Donations 实物捐赠 : donations@h2hsh.net

Sponsorships 赞助: Sponsorship@h2hsh.net

Volunteering Questions 志愿服务问题: volunteers@h2hsh.net

- **Where is Delta Hospital? 德达医院在哪里?**

上海市青浦区徐泾镇徐乐路 109 号德达医院 (Phone: 13916295852)

- **Where is Yida Hospital? 医大医院在哪里**

上海市青浦区徐泾镇倪家角路 39 号 (Phone: 13916295852)

- **Where is Yoda Hospital? 远大心胸医院在哪里?**

上海市 徐汇区 龙漕路 218 号 远大心胸医院 3F 上海仁德基金会心连心专项基金 (200235)

Heart to Heart Shanghai a Special Fund of Rende Foundation, 3rd Floor, Yoda Cardio-Thoracic Hospital, 218 Long Cao Road, Xuhui District, Shanghai (200235)

(Phone : 13916295852)



2022 ANNUAL REPORT 年度报告

RENDE FOUNDATION 仁德基金会



Shanghai Rende Foundation is a public fund registered with Shanghai Civil Affairs Bureau beginning on December 9, 2011. It is based in Shanghai and dedicated to supporting non-governmental causes of public good as well as promoting charity innovations and industry developments throughout China. It is recognized as a trusted non-governmental public charity foundation. Heart to Heart Shanghai is a special fund established under Rende Foundation to support the cost of surgical treatment for children with congenital heart defects nationwide as well as other services to support the children and their families.

Rende Foundation and Heart to Heart Shanghai work together to help as many children with heart defects as possible each year. Rende Foundation does not charge Heart to Heart a certification or administration fee so that H2H is able to continue providing 100% of monetary donations they receive to the end users – our sponsored children. It is a wonderful partnership – one that all of us treasure and hope to maintain for years to come.

上海仁德基金会是 2011 年 12 月 9 日在上海市民政局注册成立的支持型民间公募基金会。仁德立足上海，辐射全国，致力于支持民间公益，推动公益创新，促进行业发展，成为公众信任、行业认同、推动创新的民间公募基金会。

心连心专项基金是上海在仁德基金会下设立的一个专项基金，致力于支持全国先天性心脏病儿童的手术治疗费用，并为其家庭提供相关的帮助。上海心连心携手仁德基金会，竭尽所能，每年争取帮助更多的孩子。仁德基金会更是不收取心连心任何的管理和服务费用。因此，捐赠款项才得以 100% 用于终端用户——受助的孩子们。合作是愉快的，值得我们所有人珍视。未来，让我们继续携手同行。