



Heart to Heart
SHANGHAI

上海心连心

ANNUAL REPORT

2021

2021 ANNUAL REPORT 年度报告

PREFACE 前言

2021 Year End

Happy Year of the Tiger!

No matter what you felt about The Year of the Ox, it was an amazing year for Heart to Heart. Despite COVID management at our hospitals, the loss of many volunteers who returned to either their home countries or left Shanghai for school/work/etc., difficulties in traveling in groups to the countryside, and other factors, Heart to Heart volunteers and sponsors showed their compassion, generosity and loyalty in an unprecedented fashion. Since our success is measured by the number of live-saving surgeries we are able to perform, it was our most successful year ever by far. We were able to finance, process and complete almost twice as many surgeries in 2021 as in 2020. We averaged more than one surgery per day for every day of the year – completing 406 surgeries! Considering our old record was 238 surgeries in 2019, this is quite an achievement.

Was 2021 difficult for our volunteers? Certainly. Events were often canceled right beforehand due to COVID. Playroom sessions were unable to be held for almost half the year. Assemblers were only able to attend sessions if they had had a negative COVID test within a week before volunteering. Many sponsor visits were unavailable due to COVID management. Field trips had to be limited. Paperwork doubled. It was a difficult adjustment for almost everyone, but we got through it. Note that miraculously, the knitting and sewing teams actually saw big increases in their numbers. We always had great outfits for our bears before, but each month they seem to produce even more incredible outfits and lines of clothing. Our bears are definitely ready for 2022.

Our rural school libraries and sports packages programs were still severely impacted in 2021, but we were able to go on two field trips vs. none in 2020. A mini-field trip was held in March and a regular field trip in November. Regulations were tight, but we were able to dedicate a total of 10 rural school libraries and 7 sports equipment packages. We still have sponsors in the queue for 2022. We hope to increase our trips to 3 in 2022 and be able to start dedicating their libraries and sports packages starting in May or June.

2021 ANNUAL REPORT 年度报告

Each year it seems to be a little easier for the children who need heart surgery for CHD to hear that Heart to Heart can help them. 2021 was no different. Incredibly, the increase in applications was met with an increase in sponsors / funding. Once people understood there are many more children who need help getting heart surgery, our sponsors rose to the challenge. We can never thank them enough for assisting us so selflessly in saving the children. 406 children and their families now understand that there are people in the world who want to help them. They came out of the surgery experience with renewed hope and a new perspective on life.

Everyone associated with H2H in ANY capacity should be extremely proud of what you achieved in 2021. Nothing could have happened without your work, commitment, and donations. As a team – whether you are a volunteer, a sponsor, on the Board of Directors or a member of Rende Foundation – you changed everything for the children we helped. Thank you for your generosity, selflessness, energy and commitment. You will be remembered by 406 children and families as the people who changed everything for them. Your dedication to H2H is inspiring.

Let's strive to make Year of the Tiger even better for Heart to Heart. Happy New Year!

Karen Carrington
Executive Director (Volunteer)

2021 ANNUAL REPORT 年度报告

中文翻译:

2021 年终总结

虎年快乐!

牛年即将结束了，心连心这一年非常精彩。尽管经历了医院因为新冠疫情加强了管理，许多志愿者回国或为了工作/学习搬离上海，团体出行到农村的挑战，和种种其他因素，心连心的志愿者，捐赠者发挥爱心、洪量和热忱的程度达到前所未有的新高！我们以完成挽救生命手术次数作为衡量成功的标准，2021 年是到目前为止最成功的一年。比 2020 年多了几乎一倍的手术数量，这其中增加了一倍的财务管理和流程管理的工作量。我们完成了 403 个手术，平均一天超过一台手术次数！跟 2019 年的 238 个手术记录相比，今年的成绩真的很不错。

2021 年对志愿者而言辛苦吗？这是不容置疑的！因为新冠疫情许多活动在进行之前被取消。游戏室几乎半年无法开放。后勤志愿者如果无法提供最近一周内检测阴性的证明，也无法完成工作。许多术后捐赠者探访病童和家属的安排，也因为医院疫情管理的规定无法进行，因此回访活动受到限制。文书工作加倍。每一个人都多少有适应的难度，但是我们挺过来了。编织和缝纫团队志愿者奇迹般地增长了许多。从前我们总有很不错的爱心小熊服饰，但现在每个月我们都有更多样、更吸引人的服饰。我们的爱心小熊也已经为 2022 年做好准备。

乡村图书馆和运动器材项目在 2021 年受到很大的影响，但跟 2020 年完全无法探访相比，2021 年三月份有一次较小规模的参访行程，十一月份则是一个正规的活动。虽然规定严格，但我们一共捐赠了十个乡村图书馆，七个运动器材项目。还有捐赠者在排队等着 2022 年的帮扶机会。我们希望 2022 年能够从五月或六月份开始准备就绪，至少能有三次参访行程，让捐赠者完成他们捐赠图书馆和运动器材的心愿。

先心病儿童能透过心连心的协助接受手术治疗的讯息一年比一年广泛。2021 年也不例外。最令人心动的是申请人数和捐赠者/经费成正比相搭配。每当有人知道还有更多的孩子需要手术治疗时，捐赠者也会及时联系心连心完成捐赠。我们对所有无私奉献，协助我们帮助孩子们的爱心人士致上无限感激。403 位儿童和他们的家人如今都了解到这个

2021 ANNUAL REPORT 年度报告

世界上的确有很多人愿意帮他们。他们通过手术治疗的经验，对人生和未来有了新的希望和期待。

无论付出多少，每一位心连心的伙伴都应当为大家在 2021 年的成果表现为荣。没有你们的付出，承诺，和捐赠，我们就不会持续做这么有意义的事情。作为一个团队 - 不论是志愿者，捐赠者，理事会成员，或是仁德基金会的工作人员 - 你们为我们帮助的孩子改变了一切。感谢你们的慷慨、无私、活力和承诺。403 位里的每一位孩童和受助者的家人都会记住你们的付出。

你们对心连心的贡献令人鼓舞！

让我们在虎年为创造更优秀的心连心共同努力！新年快乐！

执行总监（志愿者）

凯伦 Karen Carrington 敬上

2021 ANNUAL REPORT 年度报告

TABLE OF CONTENTS 目录

| | |
|---|----|
| Preface 前言 | 1 |
| Table of Contents 目录 | 5 |
| Heart to Heart's Mission 上海心连心的目标 | 6 |
| 2021 Sponsored Children 2021 年资助的孩子 | 7 |
| Rural School Library Project 乡村学校图书馆捐赠项目 | 21 |
| Rural School Sports Package Project 乡村学校运动包捐赠项目 | 22 |
| 2021 Sponsors 2021 年重要资助方 | 23 |
| H2H Volunteer Teams 心连心志愿团队介绍 | 25 |
| Contact Us 联络我们 | 26 |
| Rende Foundation 仁德基金会 | 28 |

2021 ANNUAL REPORT 年度报告

HEART TO HEART'S MISSION 上海心连心的目标

Our mission is to provide support and financial assistance to low income Chinese children who require heart surgery and to provide financial assistance to rural Chinese schools which require libraries, sports equipment and other essentials. For more information visit our website at www.h2hsh.com.

我们的使命是向需要心脏手术的中国低收入家庭儿童提供支持和财政援助，并向需要图书馆、运动器材和其他必需品的乡村学校提供财政援助。欲了解更多信息，请访问心连心网站 www.h2hsh.com。



Life Saving & Life Changing

挽救生命 改变命运

Donate • Volunteer • Knit Play • Support



Follow our wechat account



Address: Heart to Heart Shanghai, 3rd Floor, Yodak Cardio Thoracic Hospital, 218 Long Cao Road, Xuhui District, Shanghai (200235).
上海市徐汇区龙漕路218号远大心胸医院3F上海心连心专项基金会 (200235)



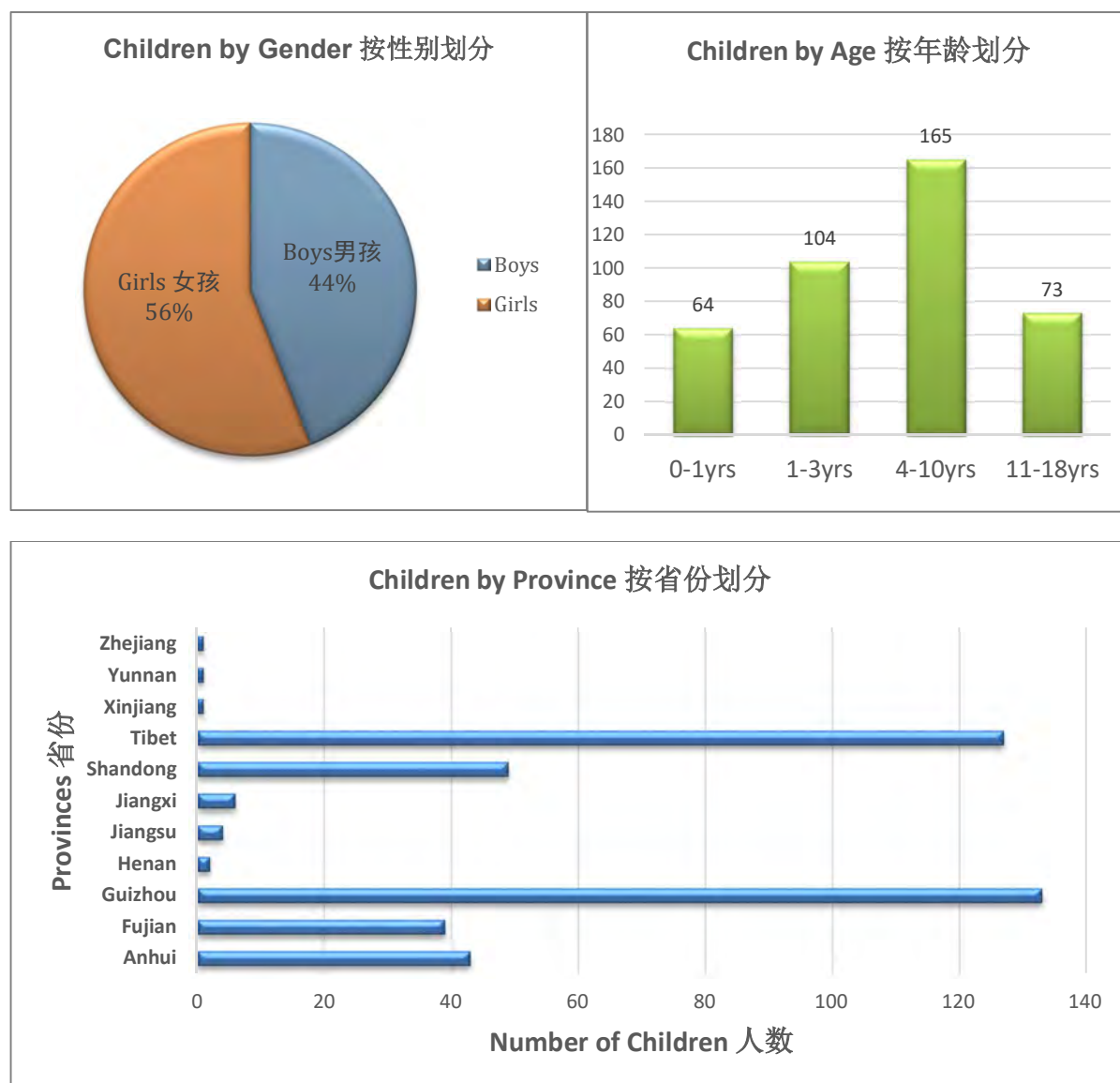
Website: www.h2hsh.com



Heart to Heart
SHANGHAI

2021 ANNUAL REPORT 年度报告

2021 SPONSORED CHILDREN ANALYSIS 2021 年资助孩子情况分析



2021 ANNUAL REPORT 年度报告

2021 SPONSORED CHILDREN'S NAME LIST 2021 年心连心资助孩子名单

Meet the Heart to Heart children sponsored in 2021 – each and every one will always remain in our hearts:

2021 年心连心遇见的孩子们 —— 每个孩子都会永远留在我们心中：

| No. | H2H# | Name | Sex | Age | Diagnosis | Province |
|-----|------|----------------|-----|-----|-----------|----------|
| 1 | 1612 | Yang Yihan | G | 10m | VSD | Guizhou |
| 2 | 1652 | Xu Xiekai | B | 4 | VSD | Fujian |
| 3 | 1657 | Zhang Yeze | B | 1 | VSD | Anhui |
| 4 | 1676 | Xu Kaiying | G | 1 | TOF | Guizhou |
| 5 | 1680 | Ying Shuhan | G | 6m | VSD | Shandong |
| 6 | 1682 | Wang Xiaoya | G | 9 | Complex | Jiangsu |
| 7 | 1689 | Li Haoyu | B | 2 | ASD | Guizhou |
| 8 | 1705 | Zhang Yiqian | G | 12 | ASD | Shandong |
| 9 | 1714 | Guan Xueming | B | 9 | VSD | Fujian |
| 10 | 1716 | Mei Zibo | B | 10 | ASD | Fujian |
| 11 | 1717 | Zhaxi Luobu | G | 10 | CHD | Tibet |
| 12 | 1718 | Bao Ziang | B | 5 | ASD | Anhui |
| 13 | 1723 | Xie Zilan | G | 3 | ASD | Guizhou |
| 14 | 1724 | Li Xinjin | G | 2 | ASD | Guizhou |
| 15 | 1725 | Ci Ren | G | 9 | PDA | Tibet |
| 16 | 1726 | Guo Zhenyichen | B | 5m | VSD | Guizhou |
| 17 | 1739 | Yang Chengling | B | 3 | complex | Guizhou |
| 18 | 1748 | Ma Longdi | B | 8 | VSD | Anhui |
| 19 | 1751 | Suolang Cuoji | G | 11 | PDA | Tibet |
| 20 | 1753 | Duoji Lamu | G | 4 | CHD | Tibet |
| 21 | 1760 | Chen Yupeng | B | 15m | VSD | Guizhou |
| 22 | 1763 | Zhaxi Deji | G | 11 | CHD | Tibet |
| 23 | 1774 | Pan Lizhen | G | 3 | ASD | Guizhou |
| 24 | 1775 | Lu Donghua | B | 17m | PS | Guizhou |
| 25 | 1779 | Wang Zhengqin | G | 11 | TOF | Guizhou |
| 26 | 1780 | Xia Yuqin | G | 9 | Glenn | Jiangsu |
| 27 | 1785 | Lu Sirui | G | 4 | ASD | Guizhou |

2021 ANNUAL REPORT 年度报告

| | | | | | | |
|----|------|---------------------|---|-----|---------|---------|
| 28 | 1786 | Wang Zitong | G | 3 | ASD | Guizhou |
| 29 | 1790 | Huang Jiahao | B | 11 | VSD | Fujian |
| 30 | 1791 | Yu Huixin | G | 15 | ASD | Fujian |
| 31 | 1792 | Zhou Yihe | G | 9 | ASD | Fujian |
| 32 | 1793 | Zhuzha Yixi | B | 10 | ASD | Tibet |
| 33 | 1794 | Caiba Zhuoma | G | 8 | ASD | Tibet |
| 34 | 1795 | Gama Renzeng Wangmu | G | 6 | ASD | Tibet |
| 35 | 1799 | Lu Siyu | B | 2 | VSD | Guizhou |
| 36 | 1800 | Zhaxi Luobu | B | 6 | ASD | Tibet |
| 37 | 1802 | Pang Jinnian | G | 4m | Complex | Anhui |
| 38 | 1803 | Chen Miaoxin | G | 14m | ASD | Guizhou |
| 39 | 1804 | Yu Yanqing | G | 5 | ASD | Guizhou |
| 40 | 1805 | Lu Changjingqi | B | 19m | VSD | Guizhou |
| 41 | 1806 | Xu Yuhan | G | 6m | ASD | Guizhou |
| 42 | 1807 | Wang Xintong | G | 2 | VSD | Guizhou |
| 43 | 1808 | Zhuoma Yangji | G | 10 | ASD | Tibet |
| 44 | 1809 | Zhu Hurui | B | 4m | VSD ASD | Guizhou |
| 45 | 1811 | Pan Zihan | G | 7m | ASD | Guizhou |
| 46 | 1812 | Fu Zeqi | B | 15 | ASD | Fujian |
| 47 | 1813 | Wu Yuxuan | B | 15 | ASD | Fujian |
| 48 | 1814 | Gama Qunzong | G | 12 | ASD | Tibet |
| 49 | 1815 | Gama Qiuji | G | 12 | ASD | Tibet |
| 50 | 1816 | Suolang Baijue | B | 6 | ASD | Tibet |
| 51 | 1817 | Guo Yulian | G | 4 | VSD | Guizhou |
| 52 | 1818 | Sang Zhen | G | 6.5 | PDA | Tibet |
| 53 | 1819 | Pingcuo Bazhu | G | 9 | ASD,PDA | Tibet |
| 54 | 1820 | Qimei Duoqi | B | 8 | ASD | Tibet |
| 55 | 1822 | Basang Wangmu | G | 5 | PDA | Tibet |
| 56 | 1823 | Zhu Jie | B | 9 | VSD | Tibet |
| 57 | 1824 | Gongsan Xire | B | 10 | PDA | Tibet |
| 58 | 1825 | Huang Zihan | G | 7 | ASD | Guizhou |
| 59 | 1826 | Suolang Duoqi | B | 7 | ASD | Tibet |
| 60 | 1827 | Pingcuo Lacong | G | 8 | ASD | Tibet |
| 61 | 1828 | Yangga Lamu | G | 4 | VSD,PFO | Tibet |



Heart to Heart
SHANGHAI

2021 ANNUAL REPORT 年度报告

| | | | | | | |
|----|------|-----------------|---|-----|---------|----------|
| 62 | 1829 | Qiangjiu Wangmu | G | 17 | PDA | Tibet |
| 63 | 1831 | Cui Yiran | B | 16m | complex | Anhui |
| 64 | 1833 | Ciren Cuo | G | 3 | ASD | Tibet |
| 65 | 1834 | Bianma Dunzhu | B | 9 | ASD | Tibet |
| 66 | 1835 | Bianma Sanduo | G | 7 | ASD | Tibet |
| 67 | 1836 | Zhaxi Shinu | G | 11 | PDA | Tibet |
| 68 | 1837 | Ciren Qunpei | B | 16 | CHD | Tibet |
| 69 | 1838 | Gong Jue | B | 11 | VSD | Tibet |
| 70 | 1839 | Gao Changmei | G | 4 | VSD PS | Guizhou |
| 71 | 1840 | Cicheng Bamu | G | 14 | CHD | Tibet |
| 72 | 1842 | Yu Haoran | B | 7m | VSD | Jiangxi |
| 73 | 1843 | Qiuying Jiaba | B | 6 | CHD | Tibet |
| 74 | 1844 | Huang Tao | B | 12 | ASD | Fujian |
| 75 | 1845 | Zhou Yuxuan | G | 6m | VSD | Guizhou |
| 76 | 1846 | Suolang Deji | G | 5 | PDA | Tibet |
| 77 | 1847 | Hu Yuxin | G | 18m | Complex | Shandong |
| 78 | 1848 | Chen Kexin | G | 14m | ASD | Guizhou |
| 79 | 1851 | Li Binbin | G | 16 | ASD | Fujian |
| 80 | 1852 | Zhang Wenfang | G | 5m | VSD | Guizhou |
| 81 | 1856 | Tongda Zhuoma | G | 3 | VSD | Tibet |
| 82 | 1857 | Baima Quzong | G | 8 | VSD | Tibet |
| 83 | 1858 | Nima Deji | G | 8 | ASD | Tibet |
| 84 | 1859 | Guru Jiancai | B | 11 | VSD,PDA | Tibet |
| 85 | 1860 | Luosang Zhuoma | G | 12 | ASD | Tibet |
| 86 | 1861 | De Cuo | G | 14 | PDA | Tibet |
| 87 | 1862 | Gongjue Quegui | B | 3 | VSD | Tibet |
| 88 | 1863 | Su Meijiayu | G | 7m | VSD | Guizhou |
| 89 | 1864 | Deng Wenqing | B | 2 | ASD | Guizhou |
| 90 | 1865 | Guo Jiawei | B | 4 | VSD | Fujian |
| 91 | 1866 | Liu Xingbao | B | 6 | TOF | Anhui |
| 92 | 1867 | Xu Yifei | G | 7 | ASD | Shandong |
| 93 | 1868 | Gao Yujia | G | 4 | ASD | Guizhou |
| 94 | 1869 | Tang Pan | G | 13 | VSD | Anhui |
| 95 | 1870 | Bi Huaqiao | G | 12m | VSD | Anhui |
| 96 | 1871 | Zhu Zichen | B | 19m | VSD | Fujian |



Heart to Heart
SHANGHAI

2021 ANNUAL REPORT 年度报告

| | | | | | | |
|-----|------|-----------------|---|-----|---------|----------|
| 97 | 1872 | Xiao Ruijie | B | 2 | TOF | Guizhou |
| 98 | 1873 | Yang Ziyu | B | 2 | VSD | Guizhou |
| 99 | 1874 | Wojin Cuomu | G | 8 | ASD | Tibet |
| 100 | 1875 | Xiang Guanyu | B | 11m | VSD | Shandong |
| 101 | 1876 | Zhuoma Quji | G | 22m | CHD | Tibet |
| 102 | 1877 | Caiwang Gongqia | B | 8 | PDA | Tibet |
| 103 | 1878 | Danzeng Cizhuo | G | 15 | PDA | Tibet |
| 104 | 1879 | Nima Zhuoga | G | 3 | PDA | Tibet |
| 105 | 1880 | Li Jiahui | G | 8 | ASD | Shandong |
| 106 | 1881 | Yang Zhichen | B | 7 | ASD | Fujian |
| 107 | 1882 | Lin Zihan | G | 5 | ASD | Fujian |
| 108 | 1883 | Chen Zihan | G | 21m | VSD | Shandong |
| 109 | 1884 | Zhaxi Lacuo | G | 8 | ASD | Tibet |
| 110 | 1885 | Pubu Qucuo | G | 5 | PDA | Tibet |
| 111 | 1886 | Ren Yichan | G | 1 | VSD | Guizhou |
| 112 | 1887 | Zhou Anan | G | 2 | VSD ASD | Anhui |
| 113 | 1888 | Huang Yichuan | B | 9m | VSD ASD | Guizhou |
| 114 | 1889 | Ma Mengyao | G | 8m | Complex | Shandong |
| 115 | 1890 | Yang Yan | G | 10m | VSD | Guizhou |
| 116 | 1891 | Fang Haobo | B | 4 | ASD | Guizhou |
| 117 | 1892 | Wang Yuexuan | G | 4 | VSD | Guizhou |
| 118 | 1893 | Wang Chenyu | B | 2 | VSD | Guizhou |
| 119 | 1894 | Zhang Jialu | G | 7 | ASD | Guizhou |
| 120 | 1895 | Lai Fumin | B | 14 | ASD | Fujian |
| 121 | 1896 | Xire Zhuoma | G | 8 | VSD | Tibet |
| 122 | 1897 | Luyong Zhuoma | G | 8 | ASD | Tibet |
| 123 | 1898 | Bumu Yongcuo | G | 7 | PDA | Tibet |
| 124 | 1899 | Jimei Gawa | B | 11 | ASD | Tibet |
| 125 | 1900 | Lawang Ciren | B | 11 | ASD | Tibet |
| 126 | 1901 | Zhaxi Gangdui | B | 9 | ASD | Tibet |
| 127 | 1902 | Qu Zhen | G | 7 | PDA | Tibet |
| 128 | 1903 | Zhang Yuhang | B | 13 | VSD | Guizhou |
| 129 | 1904 | Yang Hongrui | B | 9 | ASD | Guizhou |
| 130 | 1905 | Zhong Zhiqing | G | 6 | ASD PS | Jiangxi |



Heart to Heart
SHANGHAI

2021 ANNUAL REPORT 年度报告

| | | | | | | |
|-----|------|----------------|---|-----|----------|----------|
| 131 | 1906 | Qiao Hanxiao | G | 13 | complex | Shandong |
| 132 | 1907 | Pu Mu | G | 5 | ASD | Tibet |
| 133 | 1908 | Taba Bamu | G | 10 | PDA | Tibet |
| 134 | 1909 | Sun Mengxue | G | 8 | TOF | Shandong |
| 135 | 1910 | Badan Jiumi | B | 8 | PDA | Tibet |
| 136 | 1911 | Luo Mingyue | B | 3 | VSD | Guizhou |
| 137 | 1912 | Wang Yuxuan | G | 5 | VSD | Shandong |
| 138 | 1913 | Liu Zicheng | B | 7m | PDA | Fujian |
| 139 | 1914 | Liao Caiying | G | 8 | VSD | Guizhou |
| 140 | 1915 | Shao Chun | B | 16m | VSD | Guizhou |
| 141 | 1916 | Lin Ziyi | G | 8 | Complex | Anhui |
| 142 | 1917 | You Xinyu | G | 4 | PDA | Fujian |
| 143 | 1918 | Dong Muran | G | 7m | VSD | Guizhou |
| 144 | 1919 | Zhang Enyong | B | 14m | VSD | Guizhou |
| 145 | 1920 | Wei Ziqian | G | 3 | complex | Shandong |
| 146 | 1921 | Zhang Xinyan | G | 6 | PDA | Fujian |
| 147 | 1922 | Yang Xueming | B | 4 | Glenn 术后 | Guizhou |
| 148 | 1923 | Yangjia Ada | B | 16 | PDA | Tibet |
| 149 | 1924 | Mima Cuomu | G | 5 | PDA | Tibet |
| 150 | 1925 | Wujin Jiangcuo | B | 9 | PDA | Tibet |
| 151 | 1926 | Zhang Guohao | B | 3 | VSD | Guizhou |
| 152 | 1927 | Su Xinyue | G | 7 | ASD | Fujian |
| 153 | 1928 | Gao Jinyu | B | 2 | Glenn 术后 | Shandong |
| 154 | 1929 | Lu Yifan | G | 3 | VSD | Anhui |
| 155 | 1930 | Wang Yuexi | G | 7 | PDA | Anhui |
| 156 | 1931 | Long Yao | G | 15m | Complex | Guizhou |
| 157 | 1932 | Cui Miqi | G | 1 | PDA | Anhui |
| 158 | 1933 | Luobu Dunzhu | B | 13 | ASD | Tibet |
| 159 | 1934 | Sangdan Dajie | B | 10 | PDA | Tibet |
| 160 | 1935 | Zhang Wende | B | 3 | ASD | Guizhou |
| 161 | 1936 | Baima Yangji | G | 9 | PDA | Tibet |
| 162 | 1937 | Chen Yu | B | 15 | ASD | Fujian |
| 163 | 1938 | De Ji | G | 6 | ASD | Tibet |
| 164 | 1939 | Wei Yuanfan | G | 11m | VSD | Guizhou |
| 165 | 1940 | Yang Hanying | G | 18m | VSD | Guizhou |



Heart to Heart
SHANGHAI

2021 ANNUAL REPORT 年度报告

| | | | | | | |
|-----|------|-----------------|---|-----|---------|----------|
| 166 | 1941 | Gangla Sangmu | G | 8 | PDA | Tibet |
| 167 | 1942 | Suolang Duoqi | B | 7 | ASD | Tibet |
| 168 | 1943 | Zhao Baohong | B | 12 | PS | Guizhou |
| 169 | 1944 | Taba Lamu | G | 7 | ASD | Tibet |
| 170 | 1945 | Zhuoga Lamu | G | 6 | ASD | Tibet |
| 171 | 1946 | Jiang Shuhan | G | 4 | VSD | Jiangxi |
| 172 | 1947 | Pu Shiyu | B | 3 | VSD | Guizhou |
| 173 | 1948 | Duan Enyue | G | 6m | TOF | Shandong |
| 174 | 1949 | Deng Jintao | G | 11 | PDA | Fujian |
| 175 | 1950 | Lunzhu Gawa | B | 5 | PDA | Tibet |
| 176 | 1951 | Lin Yuhong | B | 2 | ASD | Fujian |
| 177 | 1952 | Chen Linshu | B | 18m | ASD | Fujian |
| 178 | 1953 | Gesang Yazhuo | B | 10 | ASD | Tibet |
| 179 | 1954 | Xu Xiaoqing | G | 9 | ASD VSD | Shandong |
| 180 | 1955 | Tang Yuxi | G | 6 | ASD VSD | Jiangsu |
| 181 | 1956 | Pingcuo Wangdui | B | 8 | VSD | Tibet |
| 182 | 1957 | Yao Chenshuo | B | 4 | VSD | Anhui |
| 183 | 1958 | Jiang Junjie | B | 5 | ASD | Fujian |
| 184 | 1959 | Dawa Lazhen | G | 7 | ASD | Tibet |
| 185 | 1960 | Sang Cuo | G | 11 | PDA | Tibet |
| 186 | 1961 | Xu Jingzhou | B | 9m | TOF | Shandong |
| 187 | 1962 | Wang Siqi | G | 11 | VSD | Fujian |
| 188 | 1963 | Danzeng Yuning | B | 11 | ASD | Tibet |
| 189 | 1964 | Wu Zixuan | G | 11 | VSD | Fujian |
| 190 | 1965 | Ye Qianyin | G | 4 | ASD | Fujian |
| 191 | 1966 | Ye Yurui | B | 2 | VSD | Fujian |
| 192 | 1967 | Caidan Zhuoga | G | 21m | PDA | Tibet |
| 193 | 1968 | Wang Zimo | B | 14m | TOF | Anhui |
| 194 | 1969 | Zhao Lixin | B | 12m | complex | Guizhou |
| 195 | 1970 | Zhang Yibo | B | 22m | VSD PDA | Guizhou |
| 196 | 1971 | Zheng Yilin | G | 6 | VSD | Fujian |
| 197 | 1972 | Zhang Yuxin | G | 12 | VSD | Fujian |
| 198 | 1973 | Yang Ling | G | 8m | ASD | Guizhou |
| 199 | 1974 | Chu Hongde | B | 11 | VSD | Shandong |
| 200 | 1975 | Gamu Shinan | G | 11 | PDA | Tibet |



Heart to Heart
SHANGHAI

2021 ANNUAL REPORT 年度报告

| | | | | | | |
|-----|------|----------------|---|-----|---------|----------|
| 201 | 1976 | Yang Ruize | B | 17m | VSD ASD | Anhui |
| 202 | 1977 | Zheng Peiyan | G | 3 | VSD | Fujian |
| 203 | 1978 | Tang Sitong | G | 2 | VSD | Guizhou |
| 204 | 1979 | Mo Zhikai | B | 6 | VSD | Guizhou |
| 205 | 1980 | Mo Tingshuo | B | 5 | VSD | Guizhou |
| 206 | 1981 | You Yujie | B | 12 | VSD | Fujian |
| 207 | 1982 | Ou Yangxuan | B | 10m | TOF | Zhejiang |
| 208 | 1983 | Jie Gacuo | G | 14 | PDA | Tibet |
| 209 | 1984 | Dun Zhuyangjin | G | 8 | ASD | Tibet |
| 210 | 1985 | Wang Pei | B | 11 | ASD | Tibet |
| 211 | 1986 | Ta Dui | B | 11 | PDA | Tibet |
| 212 | 1987 | Zhuoga Cizhuo | G | 12 | ASD | Tibet |
| 213 | 1988 | Chen Can | B | 11 | ASD | Guizhou |
| 214 | 1989 | Wang Wenxuan | B | 3 | ASD | Guizhou |
| 215 | 1990 | Guo Yinlong | B | 6m | VSD | Guizhou |
| 216 | 1991 | Tao Shipai | G | 19m | VSD PS | Shandong |
| 217 | 1992 | Zhu Zinuo | G | 2 | complex | Shandong |
| 218 | 1993 | Zhu Xuanyi | B | 3 | ASD | Jiangxi |
| 219 | 1994 | Zhu Waji | G | 3 | ASD | Tibet |
| 220 | 1995 | Dawa Renqing | B | 11 | ASD | Tibet |
| 221 | 1996 | Deng Yusen | B | 10m | VSD | Guizhou |
| 222 | 1997 | Ou Meitong | G | 7m | VSD | Guizhou |
| 223 | 1998 | Yang Xueqi | G | 19m | VSD | Guizhou |
| 224 | 1999 | Sun Shuhan | G | 23m | VSD | Shandong |
| 225 | 2000 | Deng Zishan | G | 2 | VSD | Anhui |
| 226 | 2001 | Li Yanyi | B | 4 | VSD | Anhui |
| 227 | 2002 | Chen Jinyu | B | 2 | VSD | Anhui |
| 228 | 2003 | Song Jia | B | 7 | PDA | Tibet |
| 229 | 2004 | He Jinzao | B | 2 | ASD | Guizhou |
| 230 | 2005 | Zhaxi Baizhen | G | 14 | VSD,ASD | Tibet |
| 231 | 2007 | Gui Haoyu | B | 5 | VSD | Anhui |
| 232 | 2009 | Danzeng Zhuoga | G | 19m | PDA | Tibet |
| 233 | 2010 | Qiang Mengqi | G | 9 | ASD | Anhui |
| 234 | 2011 | Si Tong | B | 7m | complex | Xinjiang |
| 235 | 2012 | A Gong | G | 16 | VSD | Tibet |

2021 ANNUAL REPORT 年度报告

| | | | | | | |
|-----|------|---------------|---|-----|----------|----------|
| 236 | 2013 | Xiao Yurou | G | 4 | VSD | Guizhou |
| 237 | 2014 | He Jinxuan | G | 4 | VSD | Anhui |
| 238 | 2015 | Dai Yaorui | B | 8m | ASD VSD | Guizhou |
| 239 | 2016 | Tangke Jiacao | B | 14m | PDA | Tibet |
| 240 | 2017 | Danzeng Tudan | B | 10 | ASD | Tibet |
| 241 | 2018 | Ciren Lasong | B | 9 | ASD | Tibet |
| 242 | 2019 | Wang Jingyu | G | 13 | ASD | Henan |
| 243 | 2020 | Zhong Wenjun | G | 12 | VSD | Fujian |
| 244 | 2021 | Wang Yuhan | G | 7 | ASD | Fujian |
| 245 | 2023 | Long Siyi | G | 10m | ASD VSD | Guizhou |
| 246 | 2024 | Li Zhiyao | B | 4 | TOF | Shandong |
| 247 | 2025 | Zheng Jiale | B | 3 | VSD | Fujian |
| 248 | 2026 | Luo Yonger | B | 10 | TOF | Fujian |
| 249 | 2027 | Lu Yuezhu | B | 9 | VSD | Guizhou |
| 250 | 2028 | Li Bowen | B | 4 | PDA | Guizhou |
| 251 | 2029 | Cui Yuxuan | G | 17m | TOF | Shandong |
| 252 | 2030 | Sun Xiaochuan | G | 2 | PDA | Shandong |
| 253 | 2031 | Zhang Fengru | G | 14 | TOF | Shandong |
| 254 | 2032 | Wei Xiaoxue | G | 13 | TOF | Guizhou |
| 255 | 2033 | Zhu Guokang | B | 7m | TOF | Anhui |
| 256 | 2034 | Liu Xiang | B | 9 | VSD | Anhui |
| 257 | 2035 | Liu Yuxuan | G | 5 | VSD | Anhui |
| 258 | 2036 | Heng Yuxi | G | 10m | VSD | Anhui |
| 259 | 2037 | Zhong Qilin | B | 2 | PDA | Guizhou |
| 260 | 2038 | Gao Ziqing | G | 2 | complex | Shandong |
| 261 | 2039 | Wang Yuxin | G | 8 | PDA | Anhui |
| 262 | 2040 | Deji Bayong | G | 9 | PDA | Tibet |
| 263 | 2041 | Tang Yulu | G | 2 | PDA | Guizhou |
| 264 | 2042 | Cheng Yanan | G | 9 | VSD | Anhui |
| 265 | 2043 | Zhou Jinting | G | 2 | complex | Fujian |
| 266 | 2044 | Ai Shixu | B | 4m | VSD | Guizhou |
| 267 | 2045 | Wang Yan | G | 3 | VSD | Guizhou |
| 268 | 2046 | Li Xintong | G | 2 | VSD | Shandong |
| 269 | 2049 | Basang Zhaxi | B | 6 | ASD | Tibet |
| 270 | 2050 | Zhao Wenhao | B | 10 | Glenn 术后 | Guizhou |



Heart to Heart
SHANGHAI

2021 ANNUAL REPORT 年度报告

| | | | | | | |
|-----|------|---------------|---|-----|---------|----------|
| 271 | 2052 | Yu Zhengman | G | 12 | ASD | Anhui |
| 272 | 2053 | Si Ruoxi | G | 4 | ASD | Henan |
| 273 | 2054 | Wang Jiahan | G | 4 | ASD | Shandong |
| 274 | 2055 | Geng Yueqi | G | 13 | ASD | Anhui |
| 275 | 2056 | Zhaxi Taba | B | 8 | ASD | Tibet |
| 276 | 2057 | Zhang Tianwei | B | 15m | PDA | Shandong |
| 277 | 2058 | Cui Junqi | B | 3 | VSD | Anhui |
| 278 | 2059 | Zhang Junyi | G | 13 | VSD | Fujian |
| 279 | 2060 | Tang Meiting | G | 7 | complex | Guizhou |
| 280 | 2061 | Liu Chengxin | B | 12m | VSD | Anhui |
| 281 | 2062 | Zhai Xinrui | G | 9 | ASD | Jiangsu |
| 282 | 2063 | Zhang Xiaoran | G | 10 | VSD | Shandong |
| 283 | 2064 | Li Xiongding | B | 2 | VSD | Guizhou |
| 284 | 2066 | Chen Yuhang | B | 2 | ASD | Anhui |
| 285 | 2068 | Xu Kaoyu | B | 6m | ASD | Guizhou |
| 286 | 2069 | Zhang Xinyu | G | 1.5 | PDA | Guizhou |
| 287 | 2070 | Yang Xin | G | 17m | VSD | Guizhou |
| 288 | 2071 | Zhang Fuxun | G | 6 | PDA | Guizhou |
| 289 | 2072 | Zhang Baoling | G | 2 | ASD | Fujian |
| 290 | 2074 | Xiong Junhui | G | 15 | complex | Guizhou |
| 291 | 2075 | Liu Liwei | B | 3 | PDA | Guizhou |
| 292 | 2076 | Wei Huiyi | B | 3 | ASD | Guizhou |
| 293 | 2077 | Li Jiayi | B | 6m | VSD | Anhui |
| 294 | 2079 | Luo Chenxi | B | 2 | TOF | Guizhou |
| 295 | 2080 | Su Lingyu | G | 8m | VSD | Shandong |
| 296 | 2081 | Wang Jinxuan | G | 2 | ASD PDA | Anhui |
| 297 | 2082 | Bai Zhihao | B | 11m | VSD | Guizhou |
| 298 | 2083 | Wang Xinru | G | 14 | TOF | Shandong |
| 299 | 2084 | Zhang Xiang | G | 12 | VSD | Guizhou |
| 300 | 2085 | Zhang Shuning | G | 17m | ASD VSD | Shandong |
| 301 | 2086 | Mo Mingfu | B | 8m | ASD | Guizhou |
| 302 | 2087 | Ma Zijing | G | 8 | VSD | Anhui |
| 303 | 2089 | Wang Xueran | G | 4 | ASD | Shandong |
| 304 | 2090 | Zhaxi Cipei | B | 8 | ASD | Tibet |
| 305 | 2091 | Zhao Ziqi | B | 3 | VSD | Shandong |



Heart to Heart
SHANGHAI

2021 ANNUAL REPORT 年度报告

| | | | | | | |
|-----|------|----------------|---|-----|--------|----------|
| 306 | 2092 | Yao Yutong | G | 7m | VSD | Guizhou |
| 307 | 2093 | Renqing Cuomu | G | 6 | ASD | Tibet |
| 308 | 2094 | Wang Sichen | B | 9m | PDA | Guizhou |
| 309 | 2095 | Lan Yanfeng | G | 11m | VSD | Guizhou |
| 310 | 2096 | Yuan Yiqian | G | 3 | VSD | Guizhou |
| 311 | 2098 | Bai Mingxin | G | 13 | VSD | Guizhou |
| 312 | 2099 | Zhu Liqian | G | 12 | 侧枝封堵 | Anhui |
| 313 | 2100 | Zhang Suying | G | 3 | VSD | Shandong |
| 314 | 2101 | Yan Jihe | B | 10m | VSD PS | Guizhou |
| 315 | 2103 | Zou Hongfu | B | 7 | ASD | Guizhou |
| 316 | 2104 | Lu Xianhui | G | 8 | VSD | Guizhou |
| 317 | 2105 | Wang Xinyu | G | 6 | VSD | Guizhou |
| 318 | 2106 | Zhang Ruixi | G | 12m | VSD | Guizhou |
| 319 | 2107 | Cai Yuxuan | G | 5 | PS | Guizhou |
| 320 | 2108 | Cai Yilong | B | 6 | ASD | Guizhou |
| 321 | 2109 | Pan Longtang | B | 6m | ASD | Guizhou |
| 322 | 2110 | Pan Longxuan | B | 2 | PDA | Guizhou |
| 323 | 2111 | Ma Qiuyu | G | 1 | PDA | Guizhou |
| 324 | 2112 | Li Zhicheng | B | 17m | ASD | Guizhou |
| 325 | 2115 | Nanmei Ciren | B | 7 | ASD | Tibet |
| 326 | 2116 | Zhaxi Jizong | G | 10 | PDA | Tibet |
| 327 | 2117 | Yang Bowen | B | 2 | PDA | Guizhou |
| 328 | 2118 | Ciren Luoba | G | 9 | ASD | Tibet |
| 329 | 2119 | Xire Wangmu | G | 7 | ASD | Tibet |
| 330 | 2120 | Renqing Sangbu | B | 10 | PDA | Tibet |
| 331 | 2121 | Zhou Zilin | G | 11m | VSD | Guizhou |
| 332 | 2122 | Zhu Yutong | G | 1 | ASD | Shandong |
| 333 | 2123 | Gao Zichen | B | 6m | TOF | Shandong |
| 334 | 2124 | Zhou Yueting | G | 22m | PDA | Guizhou |
| 335 | 2126 | Gong Zhijie | G | 7m | VSD | Guizhou |
| 336 | 2127 | Wang Chenshuo | G | 3 | PDA | Shandong |
| 337 | 2128 | Wang Yuxi | G | 3 | VSD | Jiangxi |
| 338 | 2129 | Li Xiuyan | G | 3 | VSD | Guizhou |
| 339 | 2130 | Gama Zhaxi | B | 7 | VSD | Tibet |
| 340 | 2131 | Zhao Yanshu | G | 3 | PS | Shandong |



Heart to Heart
SHANGHAI

2021 ANNUAL REPORT 年度报告

| | | | | | | |
|-----|------|----------------|---|-----|-------------------------|----------|
| 341 | 2133 | Qi Chenyu | B | 6m | VSD | Anhui |
| 342 | 2136 | Liu Hanwen | B | 7m | TOF | Shandong |
| 343 | 2137 | Shan Lele | G | 8 | VSD | Anhui |
| 344 | 2138 | Ma Yingxin | G | 17 | VSD | Shandong |
| 345 | 2139 | Gama Cisong | B | 9 | ASD | Tibet |
| 346 | 2140 | Dai Yuze | B | 6m | TOF | Shandong |
| 347 | 2142 | Wan Ruchen | B | 2 | ASD | Guizhou |
| 348 | 2143 | Yang Jin | B | 9 | VSD | Guizhou |
| 349 | 2144 | Zhang Wenjing | G | 4 | VSD | Guizhou |
| 350 | 2145 | Zhao Zijun | B | 8 | VSD | Guizhou |
| 351 | 2146 | Bi Zichen | B | 3 | VSD | Anhui |
| 352 | 2147 | Zhaxi Jiacao | B | 13 | ASD | Tibet |
| 353 | 2148 | Ciren Meiga | G | 16 | ASD | Tibet |
| 354 | 2149 | Zhaxi Yangmu | G | 15 | ASD | Tibet |
| 355 | 2150 | Ciren Baizong | G | 3 | PDA | Tibet |
| 356 | 2151 | Yangjin Cuo | G | 13 | ASD | Tibet |
| 357 | 2177 | Pan Zhenhuan | G | 22m | complex | Guizhou |
| 358 | 2178 | Sang Zhu | B | 14 | ASD | Tibet |
| 359 | 2179 | Pubu Dajie | B | 11 | ASD | Tibet |
| 360 | 2180 | Ciren Duoqi | B | 4 | PDA | Tibet |
| 361 | 2181 | Gama Danba | B | 10 | ASD | Tibet |
| 362 | 2182 | Gama Shiqu | G | 13 | PDA | Tibet |
| 363 | 2183 | Duoqi Yuzhen | G | 7 | ASD | Tibet |
| 364 | 2184 | Luoqiu Jiaca | B | 4 | VSD | Tibet |
| 365 | 2185 | Wang Zongcheng | B | 7 | complex | Shandong |
| 366 | 2186 | Li Wenhan | B | 5 | TOF | Anhui |
| 367 | 2187 | Lu Wei | B | 13 | ASD | Guizhou |
| 368 | 2188 | Pang Jinnian | G | 1 | VSD | Anhui |
| 369 | 2190 | Caidan Luobu | B | 22m | VSD | Tibet |
| 370 | 2191 | Long Baogui | B | 17 | TOF | Guizhou |
| 371 | 2192 | Long Zhenzhen | G | 10 | complex | Guizhou |
| 372 | 2193 | Yang Peifeng | B | 5 | TECD | Guizhou |
| 373 | 2198 | Zhang Jingxuan | G | 6 | VSD | Guizhou |
| 374 | 2201 | Wu Antao | B | 20m | Narrow pulmonary artery | Guizhou |

2021 ANNUAL REPORT 年度报告

| | | | | | | |
|-----|------|----------------|---|-----|---------|----------|
| 375 | 2202 | Chen Shaoyang | B | 10m | VSD | Guizhou |
| 376 | 2203 | Deqing Quzhen | G | 5 | PDA | Tibet |
| 377 | 2204 | Dawa Qucuo | G | 4 | PDA | Tibet |
| 378 | 2205 | Daji Sangga | G | 5 | ASD | Tibet |
| 379 | 2207 | Hu Wancheng | B | 17m | VSD | Guizhou |
| 380 | 2208 | Wang Yutong | G | 3 | VSD | Yunnan |
| 381 | 2210 | Min Wenming | B | 11m | PA | Guizhou |
| 382 | 2211 | Chen Cheng | B | 4m | VSD | Guizhou |
| 383 | 2212 | Zhu Xinyao | G | 8 | PDA | Shandong |
| 384 | 2213 | Wang Mingda | B | 9 | ASD | Guizhou |
| 385 | 2214 | Ta Jiang | G | 13 | ASD | Tibet |
| 386 | 2215 | Chen Jiahui | G | 11m | VSD AR | Shandong |
| 387 | 2216 | Zheng Ziyang | B | 3 | ASD | Jiangxi |
| 388 | 2217 | Dawa Zhuoma | G | 7 | PDA | Tibet |
| 389 | 2218 | Ciren Quji | G | 13 | ASD | Tibet |
| 390 | 2219 | Sa Zong | G | 10 | ASD | Tibet |
| 391 | 2221 | Yang Kerui | G | 11m | ASD PS | Shandong |
| 392 | 2222 | Suonan Bajie | B | 8 | ASD | Tibet |
| 393 | 2224 | Nanzhuo Jiamu | G | 6 | PDA | Tibet |
| 394 | 2225 | La Sang | G | 7 | PDA | Tibet |
| 395 | 2226 | Luobu Ciwang | B | 11 | PDA | Tibet |
| 396 | 2228 | Gongque Qucuo | G | 10 | PDA | Tibet |
| 397 | 2230 | Lan Weixi | G | 20m | complex | Guizhou |
| 398 | 2231 | Chen Guangzu | B | 2 | VSD | Guizhou |
| 399 | 2239 | Wang Xiaoqiang | B | 10 | VSD | Guizhou |
| 400 | 2252 | Gesang Wangmu | G | 9 | PDA | Tibet |
| 401 | 2255 | Chen Yufei | G | 5 | ASD | Shandong |
| 402 | 2280 | Liu Jiayueteng | B | 17m | VSD | Guizhou |
| 403 | 2281 | Yang Youshen | B | 11m | VSD | Guizhou |
| 404 | 2286 | Li Haobo | B | 2 | VSD | Shandong |
| 405 | 2287 | Lian Peng | B | 6 | complex | Shandong |
| 406 | 2292 | Li Bohan | B | 4 | PS | Anhui |

2021 ANNUAL REPORT 年度报告

H2H RURAL SCHOOL LIBRARY PROGRAM 心连心乡村学校图书馆捐赠项目

Our rural school library program was initiated in 2006. Although heart surgeries have always been our primary focus, early visits to our sponsored children's rural homes, villages, and schools made us aware of their very basic living and educational environments. Most books and educational aids were either old or non-existent. Discussions with headmasters and local educational officials revealed that little was available to the schools for supplementary library books. We established that RMB 20,000 would purchase a large selection of curriculum supporting reference and library books. We also found it would be most appropriate and cost effective if the headmasters selected and purchased the books needed on credit with a regional supplier. Heart to Heart would then pay the supplier during/after the library dedication ceremony.

Although conditions at schools have changed for the better over the years, rural primary schools still need books that encourage children to read and give them a sense of the outside world. Computers are also needed. Thus, the program has continued to be very popular both with the schools themselves and our donors who wish to promote education. As of 2021 December Heart to Heart has sponsored 156 rural school libraries in Anhui, Guizhou, Henan, Hunan, Jiangsu, Jiangxi, Shandong and Zhejiang provinces.

As noted in the letter from the Executive Director, our rural school library program was severely impacted in 2021. Due to COVID restrictions, we were only able to make two trips to the countryside to donate school libraries. We hope to be able to make more trips and donations in 2022.

心连心乡村学校图书馆项目始于 2006 年。虽然心脏病手术的资助一直是我们的重点，但在访问过赞助患儿所在的乡村家庭、村庄、学校之后，我们对他们的生活和教育环境有了更多了解。我们发现大多数的少儿图书及辅助教育设施是老旧甚至缺失的。通过和当地学校的校长及教育官员的沟通，我们了解到只有很少的能够被用于当地学校图书馆的书籍采购。我们计算后发现，两万元即可帮助学校购入大量的教辅书及课外读物。另外，由校长亲自挑选图书并向当地供应商购买图书是最合适、最经济实惠的方式。

虽然近年来学校的情况得到一定改善，但乡村小学依然需要更多图书来鼓励孩子们阅读，帮助他们了解外面的世界。并且，电脑设备也是短缺的。因此，心连心的这个项目对乡村学校以及希望促进教育的捐助者们来说都是很重要的。截止 2021 年 12 月，心连心已经赞助了 156 所位于安徽、贵州、河南、湖南、江苏、江西、山东和浙江等地的乡村学校图书馆。

正如我们的执行总监在序言中所述，我们的乡村图书馆项目在 2021 年受到了严重的影响。受疫情影响，我们的志愿者仅仅完成了两次下乡回访进行图书赞助，希望 2022 年我们可以增加回访及捐赠的次数。

2021 ANNUAL REPORT 年度报告

RURAL SCHOOL SPORTS EQUIPMENT PACKAGE PROGRAM

心连心乡村学校运动包捐赠项目

Our rural school sports equipment package program was initiated in 2019. While talking with headmasters and students about what their schools need besides libraries, we found that most are trying to develop their athletics programs as well. Chinese students are renowned for their dedication to studying, but it seems that more and more children are out of shape because they don't get enough exercise. This is true in the cities and countryside alike. The government is building tracks and other things to help the schools, but most schools also want more practical things to make exercise attractive to students - ping pong tables, badminton sets, footballs, jump ropes, etc. These are easily purchased and are very cheap for the schools to order. We've found that RMB 5,000 covers a wide variety of things they need.

As of 2021 December 31, Heart to Heart has sponsored 16 rural school sports packages in primary schools in Anhui, Hunan, Jiangsu, Jiangxi and Shandong.

As noted in the letter from the Executive Director, our rural school sports equipment package program was severely impacted in 2021. Due to COVID restrictions, we were only able to make two trips to the countryside to donate school sports packages. We hope to be able to make more trips and donations in 2022.

心连心乡村学校运动包捐赠项目开始于 2019 年。当我们和乡村学校校长以及学生们谈起除图书馆以外，学校还需要什么支持时，大部分学校反馈他们都在努力发展体育项目。中国学生对待学习的努力认真是全世界都出了名的，但似乎越来越多的孩子由于没有得到足够的体育锻炼而身体状况也不佳，这一情况在城市和乡村都是很相似的。政府会修建跑道等设施来支援学校，但大部分学校也希望有更多实用的东西来吸引孩子们进行运动锻炼，如乒乓桌、羽毛球套装、足球、跳绳等。它们很容易被购买，并且也很便宜。五千元人民币就可以帮助一所乡村学校采购到大量的运动器材。

截至 2021 年 12 月 31 日，心连心已资助了安徽、湖南、江苏、江西、山东等地的 16 所乡村小学的运动设施。

正如我们的执行总监在序言中所述，我们的乡村学校运动包捐赠项目在 2021 年受到了严重的影响。受疫情影响，我们的志愿者仅仅完成了两次前往乡村学校开展运动包捐赠项目，希望 2022 年我们可以增加回访及捐赠的次数。

2021 ANNUAL REPORT 年度报告

2021 SPONSORS 2021 年主要捐助者

Heart to Heart is very grateful to all of our donors no matter what they gave us – in-kind goods or monetary donations. All are special and all helped us achieve the amazing 2021 results. We would particularly like to thank the following donors, however, for your incredible support in 2021.

衷心感谢我们所有的捐助者，不管他们给了心连心什么——实物还是资金捐助。所有这些都很特别，都帮助我们取得了令人惊叹的 2021 年的成绩。然而，我们要特别感谢以下捐助方，感谢你们在 2021 年给予的大力支持。

DONATIONS MORE THAN RMB 400,000

- Y.P.

DONATIONS BETWEEN 300,000 – 400,000

- Baillie Gifford Investment Management Shanghai 柏基投资管理（上海）有限公司
- Karen's 2021 H2H China 5,000 Km Challenge
- Oliver Wyman
- Texas Instruments 德州仪器半导体技术(上海)有限公司
- TEC - 绩献企业管理咨询
- Taian Table
- Cristian Di Lenardo
- 2021 Art for Hearts
- Fortune Kindergarten Yulin

DONATIONS BETWEEN 200,000 – 299,999

- SUI Hongqiao 上海协和双语学校
- Vicky Tan
- Apple Christmas Party
- Ryan's Charity Bike Ride
- GAP
- Apple Montessori
- Brookfield 博得莱商业管理（上海）有限公司

2021 ANNUAL REPORT 年度报告

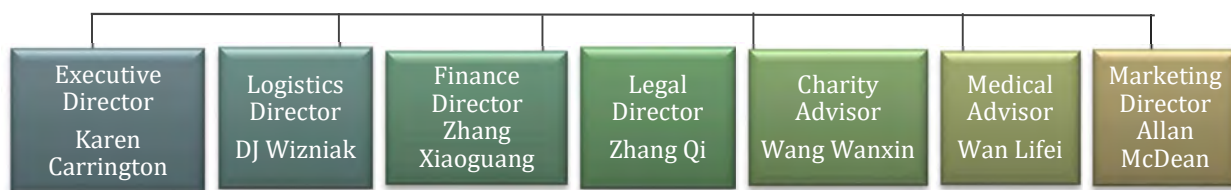
DONATIONS BETWEEN 100,000 – 199,999

- He Jing 浙江金亚泰休闲用品有限公司
- H2H Charity Golf Tournament 上海鑫慕文化传播有限公司
- SUIS Shangyin
- Green Escape Market
- CBC Employee Donation
- Europlacer (Intl) Ltd.
- 昆山杰恩公益基金会
- BritCham Ball

2021 ANNUAL REPORT 年度报告

HEART TO HEART VOLUNTEER TEAMS 上海心连心志愿服务团队

Heart to Heart Board of Directors 心连心董事会成员



2021 ANNUAL REPORT 年度报告

CONTACT US 我们的联系方式

For more information on how to donate, support and/or volunteer, please contact the following persons: 欲了解更多有关捐助、支持或加入志愿者行列, 请参考以下名单联系相关志愿者:

Contact Us:

General Information: Karen Carrington (info@h2hsh.net)

Admin Team: Grace Hsu, Juliana Zeiske, Karen Carrington

Annual Report: Mei Kang

Assembly Director: DJ Wizniak

Assembly Team Backup: Taeko Fujino

Assembly Team Correspondence: Cristina Buron Pust (assembling@h2hsh.net)

Charity Liaison/Regulations Director: Joyce Wang

Chinese Language Communication Manager: Kai Tsou

Chinese Language Communication Team: Cheng Zhang, Ella Liu, Freya Pan, Jie Huang, Lusia Lu, Mei Kang, Rose Ding & Yen-ling Von Meister

CSR and Group Volunteering Manager: Bev Darle (groupvolunteers@h2hsh.net)

CSR and Group Volunteering Team: Cristina Buron Pust, DJ Wizniak & Taeko Fujino

Donations (New & Gently Used Goods): DJ Wizniak (donations@h2hsh.net)

Events Manager: Lusia Lu (events@h2hsh.net)

Events Team Management Backup/Assistant: Karen Carrington

Events Team On-site Supervisors: Linda Luo, Yifan Li

Events Team Coordinator/Runners: Karen Carrington

Executive Director: Karen Carrington (execdirector@h2hsh.net)

Field Trips: Karen Carrington (sponsorship@h2hsh.net)

Finance Manager: Karen Carrington

Finance Team: Juliana Zeiske

Heart Bear Order Manager: Juliana Zeiske

Knitting Manager: Helen Anderson (knitting@h2hsh.net)

Legal Counsel/Director: Zhang Qi

Media and Marketing Manager/Director: Allan McDean



2021 ANNUAL REPORT 年度报告

Medical Liaison/Information Director: Alonso Wan

Minhang/Qingpu/Songjiang Coordinator: Michael Chew

Minhan/Qingpu/Songjiang Backup: Ming Zhou

New Volunteer Coordinators: Ella Liu, Liz Ting, Patricia Prado

Newsletter Editor: Debra Carter (newsletter@h2hsh.net)

Newsletter Backup: Emma Ball

Newsletter Proofreader: Karen Carrington

On-line Projects Manager: Nancy Kong

On-line Sales Manager: Kate Bayles

On-line Sales Team: Caz Johnstone, Debbie Foster, Theresa Mehling

Playroom Manager: Cristina Buron Pust

Processes & Procedures: Jenny Hua and Nari Elhadidi

Project Management: April Shi

Recruitment & Retention: Stuart Dunn

Recruitment & Retention Backup: Annika Weiss

Schools Team Manager: Pearl Hu

Schools Team Liaisons: Annabel Tong, Ella Liu, Helen Jiao, Helen Morris, Karen Carrington, Kate Bayles, Lidel Freeman, Melody Huang & Sophia Luo

Sewing Team Managers: Ingrid Dupper

Sponsorship & Hospital Visits Manager: Karen Carrington (sponsorship@h2hsh.net)

Sponsorship/Hospital Visits Team: Allan McDean, DJ Wizniak, Mei Kang, Michael Chew, Ming Zhou, Nancy Kong & Steve Lee

Webmasters: Eric Wang (database), Jung-wo Lee (website) & Karen Carrington (content)

Website pictures (remote): Lenel Roux

WeChat Account Manager: Mei Kang

WeChat Account Backup: Jessica Zheng

- Office Location: YODA Cardio Thoracic HOSPITAL
心连心上海办公地点: 上海市徐汇区远大心胸医院
- Address: No. 218 Long Cao Road, Xuhui District, 200235 Shanghai
地址: 上海市徐汇区龙漕路218号 200235

2021 ANNUAL REPORT 年度报告

RENDE FOUNDATION 仁德基金会



Shanghai Rende Foundation is a public fund registered with Shanghai Civil Affairs Bureau beginning on December 9, 2011. It is based in Shanghai and dedicated to supporting non-governmental causes of public good as well as promoting charity innovations and industry developments throughout China. It is recognized as a trusted non-governmental public charity foundation. Heart to Heart Shanghai is a special fund established under Rende Foundation to support the cost of surgical treatment for children with congenital heart defects nationwide as well as other services to support the children and their families.

Rende Foundation and Heart to Heart Shanghai work together to help as many children with heart defects as possible each year. Rende Foundation does not charge Heart to Heart a certification or administration fee so that H2H is able to continue providing 100% of monetary donations they receive to the end users – our sponsored children. It is a wonderful partnership – one that all of us treasure and hope to maintain for years to come.

上海仁德基金会是 2011 年 12 月 9 日在上海市民政局注册成立的支持型民间公募基金会。仁德立足上海，辐射全国，致力于支持民间公益，推动公益创新，促进行业发展，成为公众信任、行业认同、推动创新的民间公募基金会。

心连心专项基金是在仁德基金会下设立的一个专项基金，致力于支持全国先天性心脏病儿童的手术治疗费用，并为其家庭提供相关的帮助。上海心连心携手仁德基金会，竭尽所能，每年争取帮助更多的孩子。仁德基金会更是不收取心连心任何的管理和服务费用。因此，捐赠款项才得以 100% 用于终端用户——受助的孩子们。合作是愉快的，值得我们所有人珍视。未来，让我们继续携手同行。