

Heart Bear Christmas Dress with Holly

Knit-in-the-round from the hem up

Materials: approx. 33g DK yarn in Main Colour (MC)
 approx. 2g DK yarn in Mid Green (CC1)
 approx. 2g DK yarn in Red (CC2)
 thin red ribbon (optional)

Needles: set of five 4mm double point needles (dpns)
 one 4mm 45cm-60cm circular needle (optional)

Notions: sharp darning needle, stitch markers
 row counter (optional)

Gauge: 28 stitches, 36 rows = 10cm X 10cm

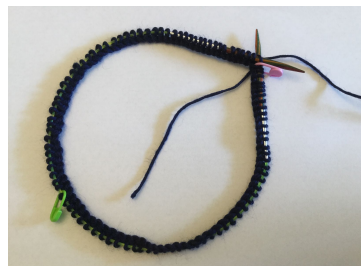
Sizing: Fits teddy with a waist of around 30cms

Note:

- Dress is knit from hem to neck, **Back** and **Front** are identical
- It is knit in-the-round, with the **Skirt** stitches knitted on either a single circular needle or on set of five dpns
- When **Skirt** stitches are reduced to form **Waist**, dpns are then used
- Main Colour (MC) can be White, Dark Green or Dark Blue
- When adding any yarn always leave a short tail (10cm) for sewing in later

Abbreviations and techniques:

k	=	knit	RS	=	Right Side
p	=	purl	WS	=	Wrong Side
st	=	stitch	MC	=	Main Colour
sts	=	stitches	CC1	=	Contrast Colour 1
dec	=	decrease	CC2	=	Contrast Colour 2
rep	=	repeat	sl	=	slip
k2tog	=	knit 2 stitches together	slk	=	slip one stitch knitwise
p2tog	=	purl 2 stitches together	yfd	=	yarn forward
ybk	=	yarn back			
[]	=	work instructions in square brackets the number of times stated			
stst	=	stockingnette stitch—knit RS rows, purl WS rows. Also created by simply knitting in-the-round			
cable cast-on in knit	=	Firm, non-elastic cast-on. Stay loose, or it can be quite difficult to get the yarn through. http://newstitchaday.com/cable-cast-on-knitting/ or see diagram at end of written pattern			



Skirt
 Cast-on 100sts in MC using the cable cast-on method in knit. Join in the round being careful not to twist sts.

Note – to create a tight join, swap the first and last cast-on sts.

Place markers at 50sts and at start of round. Slip markers as you knit.



Row 1 (WS) – knit (100sts)



Turn work and wrap sts to prevent a hole

Note – to wrap a stitch; yfd, slk, ybk, pass slipped st back

(Knit 2 rows)
Rows 2 to 3 (RS) – knit

Begin Holly Pattern
 Join CC1 (leaves – mid green)



Note – to join yarn, tie new yarn colour around MC, leaving a short tail, slide knot down to needles

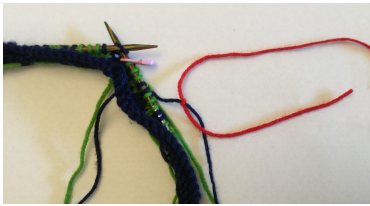


Row 4 – k1 MC, [k2CC1, k3MC] rep till 4sts rem, k2 CC1, k2 MC



Row 5 – k1 MC, [k3CC1, k2MC] rep till 4sts rem, k3 CC1, k1 MC

Row 6 – [k2MC1, k3CC1] rep till end



Join CC2 (berries – red)



Row 7 – [k1CC2, k4MC] rep till end, cut CC2 and tie off leaving a short tail



Row 8 – [k2MC1, k3CC1] rep till end



Row 9 – k1 MC, [k3CC1, k2MC] rep till 4sts rem, k3 CC1, k1 MC

Row 10 – k1 MC, [k2CC1, k3MC] rep till 4sts rem, k2 CC1, k2 MC



Cut CC1 and tie off leaving a short tail, cont in MC



(Knit 15 rows)
Row 11 to 25 - knit

Decrease for Bodice

Row 26 – [k2tog] rep to end (50sts)



Note - Change to dpns as you decrease and remove markers

place 13sts on 1st needle
place 12sts on 2nd needle
place 13sts on 3rd needle
place 12sts on 4th needle



Contrast Waistband

Restart row numbering
(Change to CC2 and knit 2 rows)



Join CC2
Rows 1 to 2 – knit in CC2
cut CC2 and tie off leaving a short tail, cont in MC



Bodice in Main Colour (MC)
(Change to MC and knit 7 rows)
Rows 3 to 9 – knit in MC

Make Armholes

Row 10 – [cast-off 7sts, k18] rep (36sts)

Place 18sts on 2nd needle (Bodice Front)

Place 18sts on 4th needle (Bodice Back)



Make Left Sleeve

Restart row numbering



Row 1 – turn work to inside and cast-on 20sts using cable cast-on method in purl

Slip 20 new sts onto 1st needle (Left Sleeve)

Turn work to RS, k2tog (last st on 1st needle to first st on 2nd needle)



(Bodice Front)

Knit rem 16sts on 2nd needle

Make Right Sleeve

Row 1 (cont) – turn work to inside and cast-on 20sts using cable cast-on method in purl

Slip 20 new sts onto 3rd needle (Right Sleeve)

Turn work to RS, k2tog (last st on 3rd needle to first st on 4th needle)

(Bodice Back)



K14, k2tog

You should have a total of 73sts across 3 needles:

20sts on 1st needle (Left Sleeve)
17sts on 2nd needle (Bodice Front)
20sts on 3rd needle (Right Sleeve)
16sts on 4th needle (Bodice Back)

Row 2 – k35, k2tog, k36 (72sts)

You should NOW have a total of 72sts across 3 needles:

20sts on 1st needle (Left Sleeve)
16sts on 2nd needle (Bodice Front)
20sts on 3rd needle (Right Sleeve)
16sts on 4th needle (Bodice Back)

Yoke

(Knit 3 rows)



Rows 3 to 5 – knit

Yoke 1st Decrease

Row 6 – [k2tog, k2] rep 17 times (54sts)

(Knit 2 rows)

Rows 7 to 8 – knit

Yoke 2nd Decrease

Row 9 – k2, [k2tog, k7] rep 4 times, k2tog, k6 (48sts)

(Knit 2 rows)

Rows 10 to 11 – knit

Yoke 3rd Decrease

Row 12 – k1, [k2tog, k6] rep 4 times, k2tog, k6 (42sts)

(Knit 1 row)

Row 13 – knit

Neckband

Row 14 – purl

Row 15 – cast-off in purl

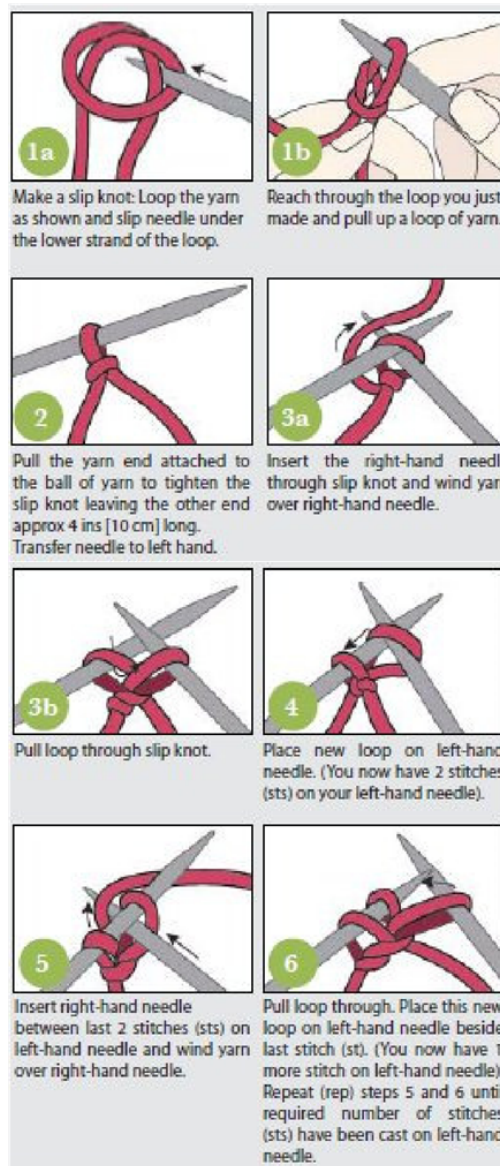
Cut yarn leaving a short tail.



Finishing

Sew in 8 tails, press skirt and sleeves.

Cable Cast-on in Knit

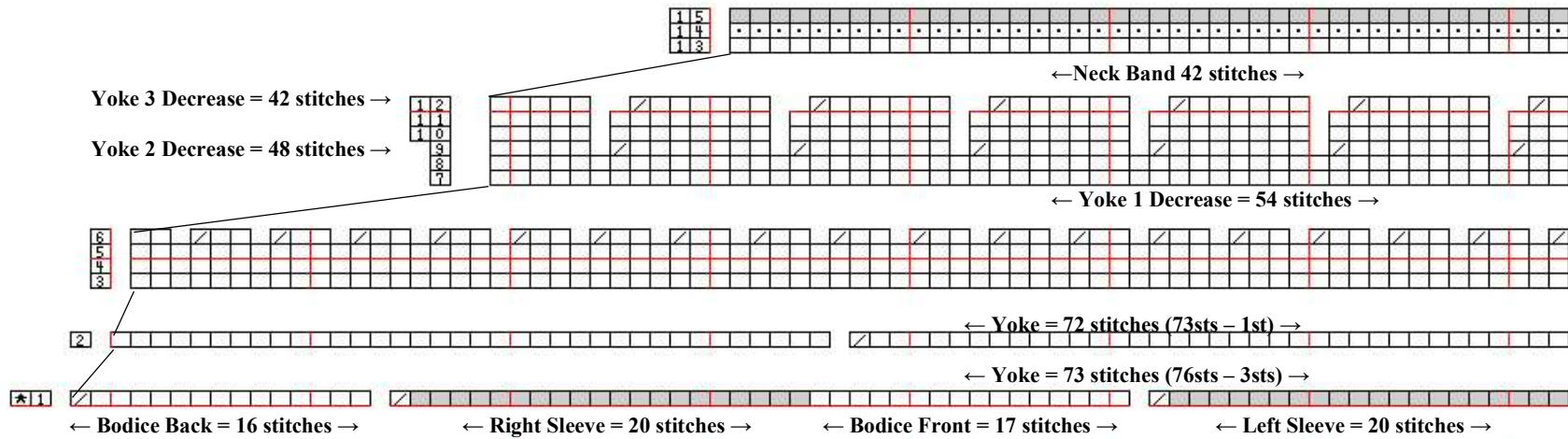


Heart Bear Christmas Dress with Holly

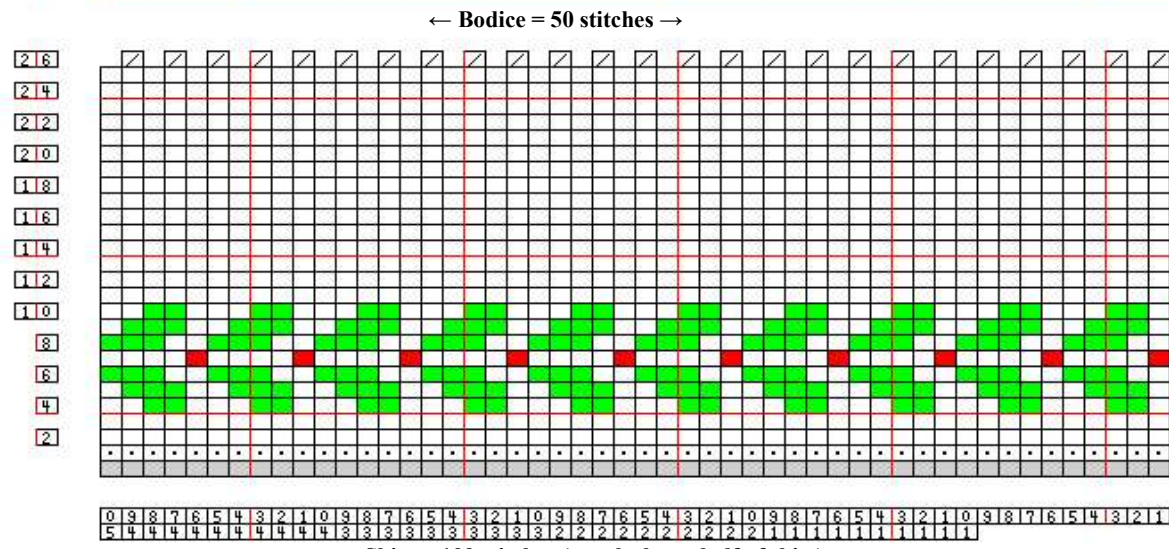
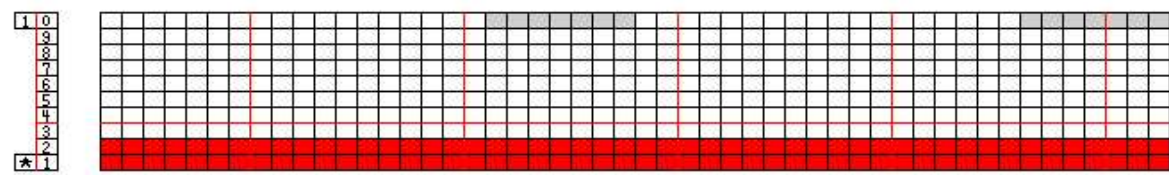
Knit-in-the-round from the hem up

Note – read all rows from right to left ←

Row Number of Stitches



- Cast-on or Cast-off stitches (use cable cast-on method)
- Purl on right side (RS) or Knit on wrong side (WS)
- Knit in main colour (MC)
- Knit in Mid Green (CC1)
- Knit in Red (CC2)
- Knit 2 stitches together (k2tog)
- Restart row numbering



Row Number	Stitches
1	5
2	4
3	4
4	2
5	2
6	2
7	2
8	2
9	2
10	2
11	2
12	2
13	2
14	2
15	2
16	2
17	2
18	2
19	2
20	2
21	2
22	2
23	2
24	2
25	2
26	2
27	2
28	2
29	2
30	2
31	2
32	2
33	2
34	2
35	2
36	2
37	2
38	2
39	2
40	2
41	2
42	2
43	2
44	2
45	2
46	2
47	2
48	2
49	2
50	2
51	2
52	2
53	2
54	2
55	2
56	2
57	2
58	2
59	2
60	2
61	2
62	2
63	2
64	2
65	2
66	2
67	2
68	2
69	2
70	2
71	2
72	2
73	2
74	2
75	2
76	2
77	2
78	2
79	2
80	2
81	2
82	2
83	2
84	2
85	2
86	2
87	2
88	2
89	2
90	2
91	2
92	2
93	2
94	2
95	2
96	2
97	2
98	2
99	2
100	2