

Heart to Hear Innocent Hats – Plain Hat, Hat with Ears and Hippo Hat



Materials: Plain Hat approx. 4g DK yarn
 Hat with Ears approx. 4g DK yarn
 Hippo Hat approx. 4g DK yarn in Blue
 approx. 2g DK yarn in White
 small amount white stuffing
 small amount of thick black yarn

Needles: set of five 4mm double point needles (dpns)

Notions: sharp darning needle, stitch marker

Sizing: Hat fits on top of an Innocent smoothie bottle, diameter 4cm, circumference 13cm

Dimensions: Diameter 5cm, circumference 15cm, depth approx. 5cm



Note:

Plain Hat is knit in-the-round from the bottom (brim) up. The starting yarn tail is knitted in on the second row.

Hat with Ears is knit like the *Plain Hat* but with an extra row that has two knitted picot stitches to make the ears.

Hippo Hat is the *Hat with Ears* knit in blue with a knitted in-the-round white snout added on. Snout stitches are picked up on the front of the hat and knitted directly onto the hat. Snout is filled with small amount of stuffing before remaining stitches are drawn up tightly and secured as for the top of the hat. White yarn tail is then used to shape the snout into a more defined shape, like a horizontal figure of eight. Finishing details of snout whiskers, eyes and eyebrows are embroidered on in black yarn.

Abbreviations:

dpn(s)	=	double point needle(s)	k2tog	=	knit two stitches together
k	=	knit	rem	=	remaining
p	=	purl	stst	=	stockingette stitch (knit each row in-the-round)
st(s)	=	stitch(s)	sl	=	slip stitch (pass stitch from left hand needle to right hand needle)

Plain Hat



Cast on 28 sts using cable cast on in knit, leave a short tail.



Divide sts over 3 dpns.

1st dpn – 10 sts

2nd dpn – 8 sts

3rd dpn – 10 sts

Join in the round being sure not to twist sts.



Swap first and last sts to make at tight join.

Row 1 – knit (28 sts)

Place marker at the beginning of the round.



Row 2 – catch the yarn tail in the next 6 to 7 sts as you knit them, trim tail.



Knit next 12 rows in stst

Rows 3 to 14 – knit

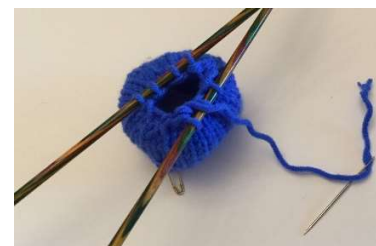


Begin crown decreases

Row 15 – k2tog 14 times (14 sts)



Row 16 – k2tog 7 times (7 sts)



Finishing

Cut yarn leaving 10cm tail. Thread tail on to darning needle and thread through remaining 7 sts, pull up tightly.



Sew reinforcing round through 7 sts again.



Poke needle through middle of hat to inside.



Weave in the tail inside and trim. Turn hat to right side and remove stitch marker.

Check sizing over bottle.



Hat with Ears

Follow instructions for the *Plain Hat* up to row 15.

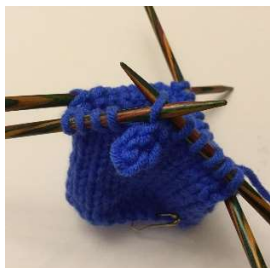
Make Ears (using picot st)

Row 15 – k6, turn, cast-on 2 sts using cable cast-on stitch in purl, cast-off 2 sts in purl, p1, turn, sl1*, k18, turn



cast-on 2 sts using cable cast-on stitch in purl, cast-off 2 sts in purl, p1, turn, sl1*, k6 (28 sts)

Note * – when slipping the st be sure to have the ear on the right side of the hat.



Begin crown decreases

Row 16 – k2tog 14 times (14 sts)

Row 17 – k2tog 7 times (7 sts)



Finishing

Cut yarn leaving 10cm tail. Thread tail on to darning needle and thread through remaining 7 sts, pull up tightly. Sew reinforcing round through 7 sts again. Poke needle through middle of hat to inside. Weave in the tail inside and trim. Turn hat to right side and remove stitch marker. Check sizing over bottle. Pinch Ears to shape.

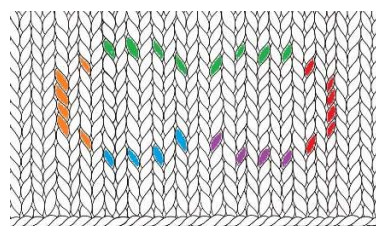
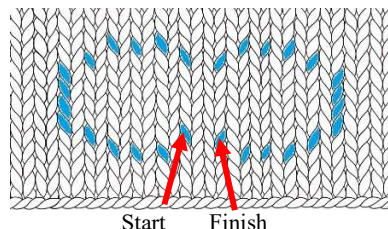
Hippo Hat

Make *Hat* with Ears in Blue.



Hippo Snout

With Front side facing and 5 dpns pick out snout stitches. See diagram below.



1st Double Point Needle

2nd Double Point Needle

3rd Double Point Needle

4th Double Point Needle

5th Double Point Needle (join to 1st DPN stitches after pick up round)



Join White yarn to first stitch, leaving very short tail.



Row 1 – use White yarn to pick up 28 snout stitches, beginning at centre bottom of snout.

Divide sts over 4 dpns.

1st dpn – 8 sts

2nd dpn – 6 sts

3rd dpn – 8 sts

4th dpn – 6 sts

Rows 2 to 5 – knit (28 sts)



Begin snout shaping

Row 6 – k2, k2tog 5 times, k4, k2tog 5 times, k2 (14 sts)

Row 7 – knit (18 sts)



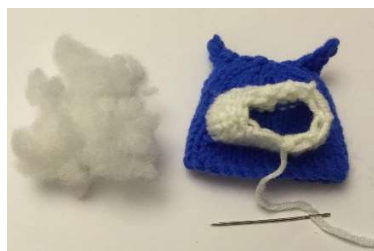
Finish snout shaping



Row 8 – k2tog 9 times (9 sts)

Stuff snout

Cut yarn leaving 10cm tail. Thread tail on to darning needle and thread through remaining 9 sts.



Stuff Snout with a small amount of stuffing. Pull up tightly.



Sew reinforcing round through 9 sts.



Poke needle through middle of snout to base of snout.



Sew three to four stitches from base of snout to top of snout to create a



horizontal figure eight shape. Finish of tail in snout.



Finishing

Thread darning needle with approx. 50 cm black yarn.

Embroider face features as shown in the following picture.



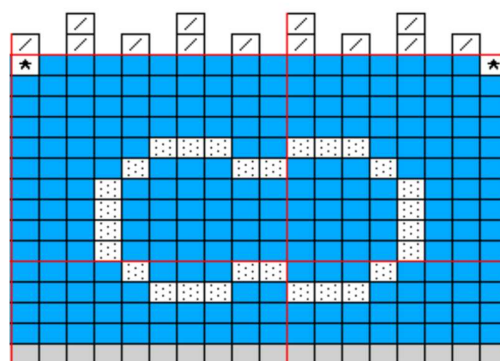
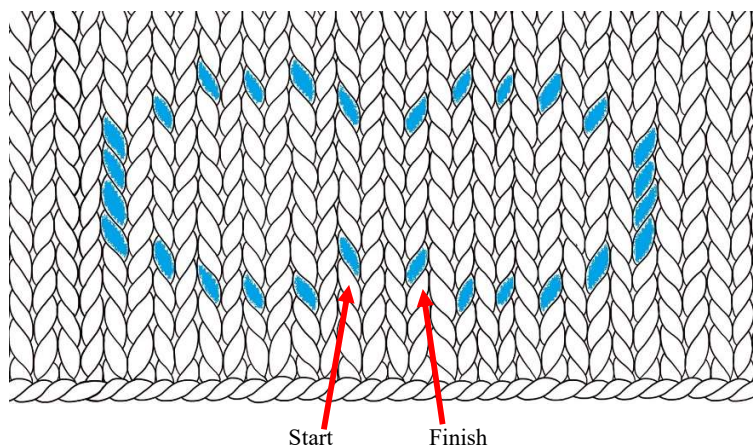
snout whiskers – 6 short horizontal stitches

eyes – one chain stitch each

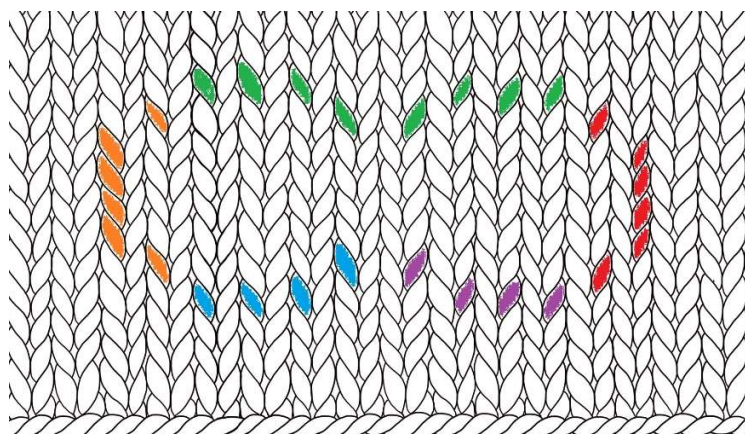
eyebrows – 2 small horizontal stitches

Fasten off the black yarn on the inside.

Hippo Snout 28 Stitch Pick Up Locations



Hippo Snout 28 Stitches – Over 5 Double Point Needles (DPN)



- 1st Double Point Needle
- 2nd Double Point Needle
- 3rd Double Point Needle
- 4th Double Point Needle
- 5th Double Point Needle
(join to 1st DPN stitches
after pick up round)



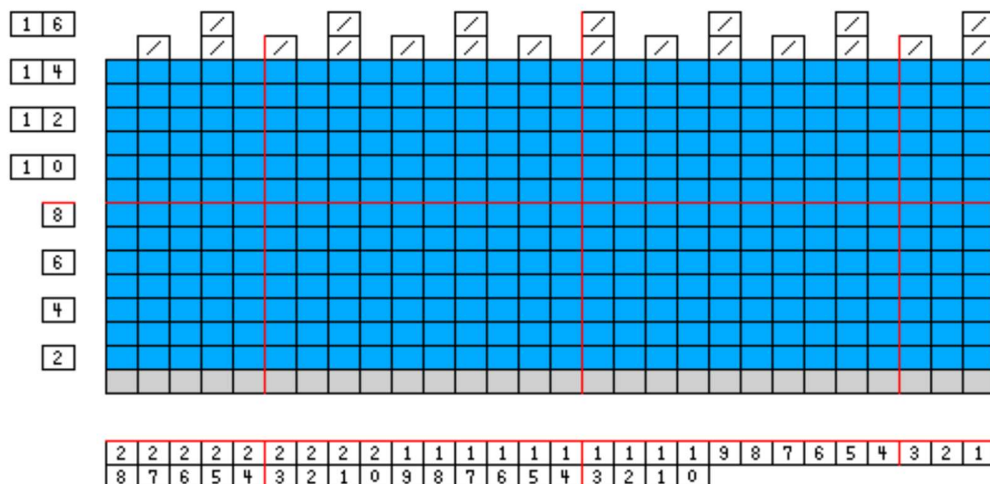
Graphs for Plain Hat and Hat with Ears

Row
Number

Plain Hat

Row
Number

Number of
Stitches

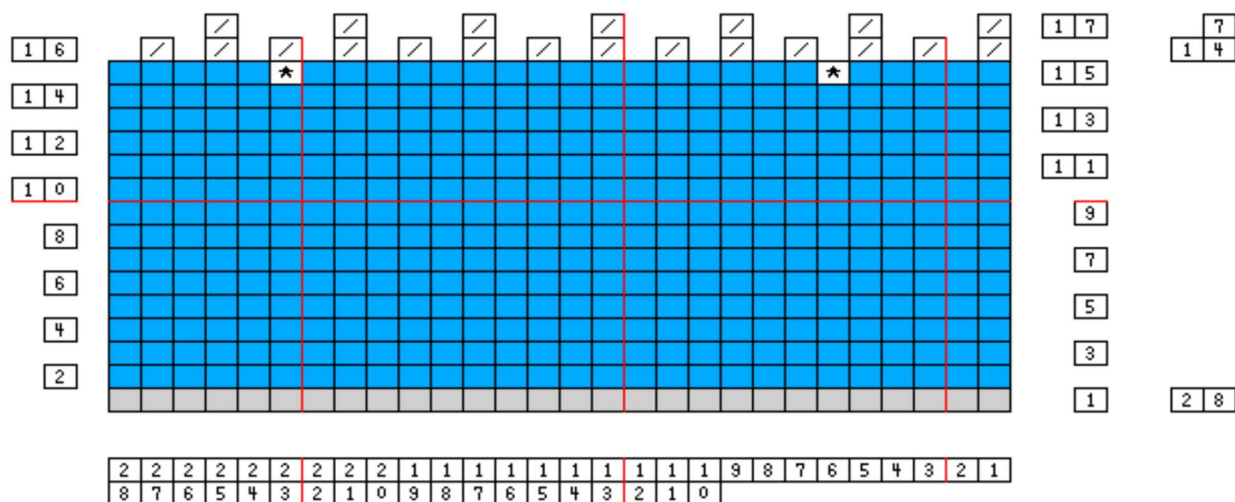


Row
Number

Hat with Ears

Row
Number

Number of
Stitches



Key



Cast-on 28 stitches



Knit in Blue



Ear Picot = cast-on 3 stitches using cable cast-on in purl, cast-off 3 stitches

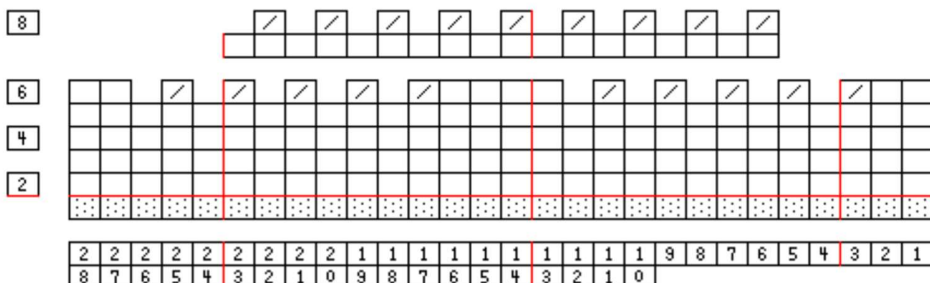


K2tog = knit two stitches together

Graphs for Hippo Hat

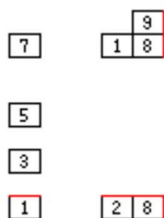
Row
Number

Hippo Snout (White)



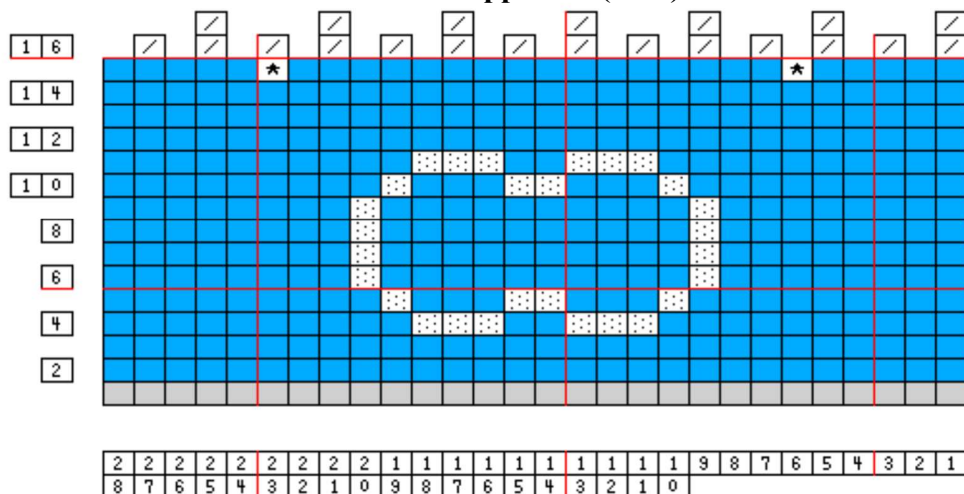
Row
Number

Number of
Stitches



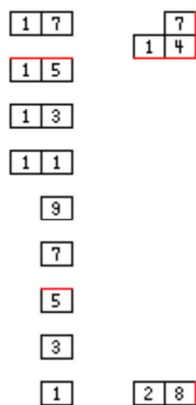
Row
Number

Hippo Hat (Blue)



Row
Number

Number of
Stitches



Key



Cast-on 28 stitches



Knit in Blue



Knit in White



Ear Picot = cast-on 2 stitches using cable cast-on in purl, cast-off 2 stitches in purl



K2tog = knit two stitches together



Pick up 28 snout stitches in White