

## Heart Bear Santa Hat - Knit in-the-Round

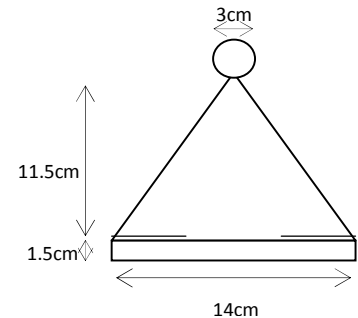
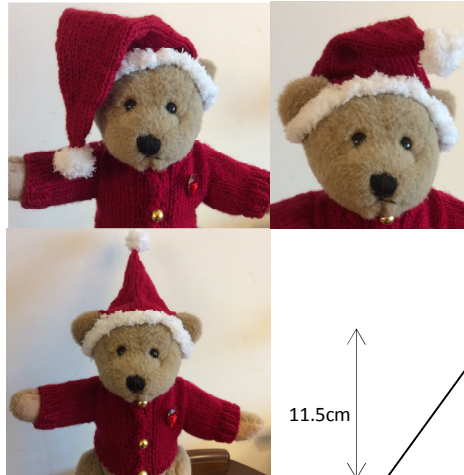
With knitted pompom and length options

- Materials:** approx 5g white fluffy yarn (approx 4.5m) for hat band and pompoms for all hat lengths  
red double knitting yarn/light worsted yarn 9g for short hat  
(12g for medium hat, 18g for long hat)
- Needles:** 4mm circular needle  
set of four 4mm double point needles (dpns)
- Notions:** darning needle  
(with large eye and sharp point)
- Gauge:** 28 stitches, 36 rows = 10cm X 10cm in red
- Sizing:** Hat fits teddy bear with head circumference of approx 30cm, ears approx 6-8cm apart on top of the head.

**Abbreviations and techniques:** see attached sheets

### Note:

The white hat band is knitted flat on the circular needle (or a long pair of 4mm straight needles). Row counting begins with the red yarn. On the third red row knitting is transferred to three dpns, joined and continued in-the-round. The pompom is knitted as a large bobble in white yarn; rows are knitted back and forth, not in-the-round.



### White hat band:

With white fluffy yarn, the circular needle and leaving a 15cm tail, cast on 44 sts using the alternating cable cast-on.

### Make ear holes:

k1, p1 first 12 sts, cast off 6 sts in k1, p1 rib, k1, p1 next 8 sts, cast off 6 sts in k1 p1 rib, k1, p1 next 12 sts (32 sts)  
(12 sts + 8 sts + 12sts = 32 sts)

### Red hat body- short hat:

Cut white yarn and tie on red yarn, leaving short 10cm tails.  
*Row 1* – kfb, k10, kfb, turn, cast on 8 sts using purlwise cable cast-on, turn, kfb, k6, kfb, turn, cast on 8 sts using purlwise cable cast-on, kfb, k10, kfb (54 sts)  
*Row 2* – purl (54 sts)  
Change to dpns, placing 18 sts on each of three needles, join the sts in-the-round, and use the fourth needle to knit with.  
*Rows 3 to 4* – knit (*next 2 rows*)

### Begin hat shaping (dec evenly after every four rows):

*Row 5* – [k2tog, k7] rep 5 times (48 sts)  
*Rows 6 to 8* – knit (*next 3 rows*)  
*Row 9* – [k2tog, k6] rep 5 times (42 sts)  
*Rows 10 to 12* – knit (*next 3 rows*)

*Row 13* – [k2tog, k5] rep 5 times (36 sts)  
*Rows 14 to 16* – knit (*next 3 rows*)  
*Row 17* – [k2tog, k4] rep 5 times (30 sts)  
*Rows 18 to 20* – knit (*next 3 rows*)  
*Row 21* – [k2tog, k3] rep 5 times (24 sts)  
*Rows 22 to 24* – knit (*next 3 rows*)  
*Row 25* – [k2tog, k2] rep 5 times (18 sts)  
*Rows 26 to 28* – knit (*next 3 rows*)  
*Row 29* – [k2tog, k1] rep 5 times (12 sts)  
*Rows 30 to 32* – knit (*next 3 rows*)  
*Row 33* – [k2tog] rep 5 times (6 sts)  
*Row 34* – knit  
*Row 35* – [k2tog] rep 2 times (3 sts)

### White pompom:

Cut red yarn and tie on white yarn, leaving short 10cm tails.  
*Row 1* – p3, turn (3 sts)  
*Row 2* – s11k, kfb, kfb (5 sts)  
*Row 3* – s11k, k4  
*Row 4* – s11k, kfb, k1, kfb, k1 (7 sts)  
*Row 5* – s11k, k6  
*Row 6* – s11k, [k2tog, k1] rep once (5 sts)  
*Row 7* – s11k, k4  
*Row 8* – s11k, [k2tog] rep once (3 sts)

### Finishing:

Cut yarn leaving a 15cm tail, thread tail onto darning needle, thread through rem 3 sts, and pull up tightly. Tie two white tails tog firmly. Curl up free white tail and poke into middle of pompom. With rem tail still on the darning needle, sew the open 'sides of the pompom tog through the base of the pompom. Weave in end in middle of pompom.  
Weave in red tail at pompom base. Using the darning needle, and the rem white tails, join the hat band and weave in ends. Weave in rem red end.  
Lightly press hat if desired.



### Length options:

For medium hat begin shaping after 8 rows of straight stst, dec evenly after every four rows.  
For long hat begin shaping after 8 rows of straight stst, dec evenly after every eight rows.  
Then continue as for short hat.

## Heart Bear Santa Hat - Knit in-the-Round – Graph

☐ Knit on the right side (RS), purl on the wrong side (RS) in white yarn

◻ Purl on the RS, knit on the WS in white yarn

■ Knit on the RS, purl on the RS in red yarn

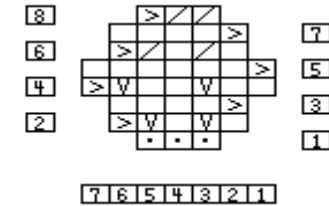
▧ k2tog (knit two stitches together)

◻ kfb (knit in front and back of stitch to make two stitches from one)

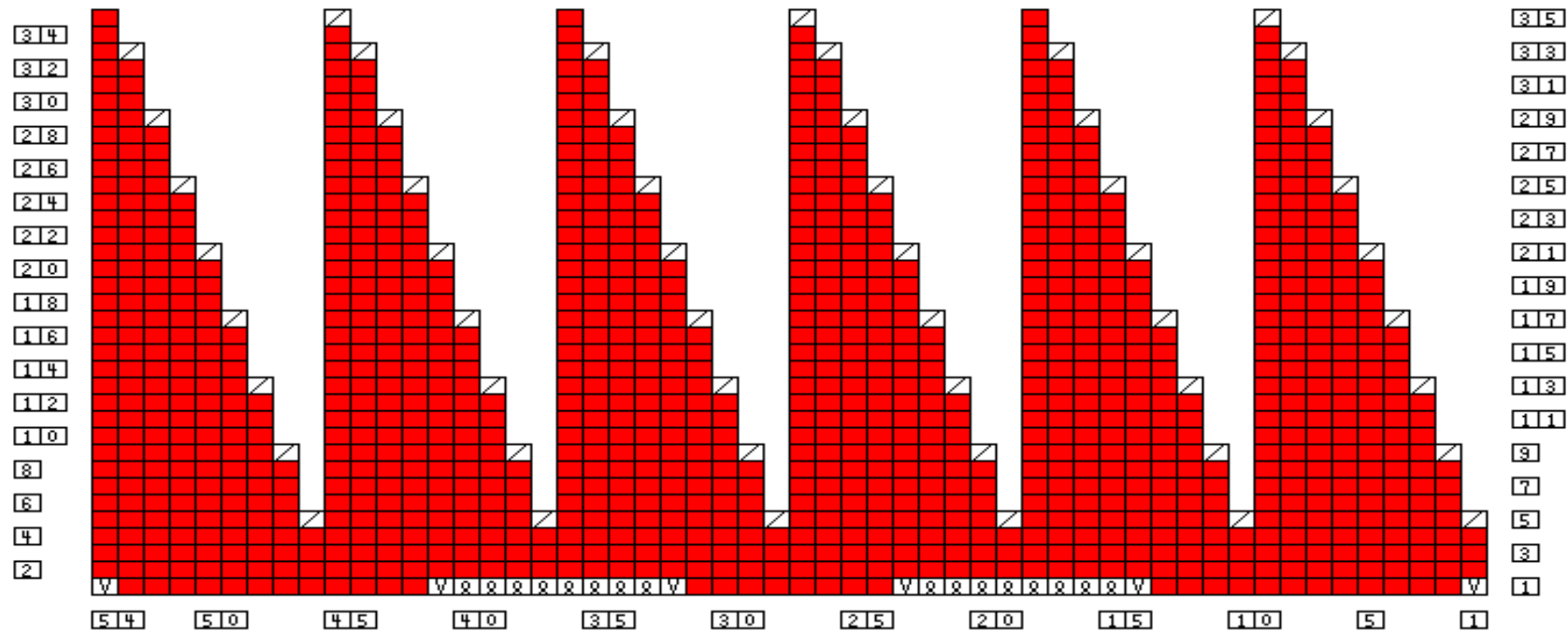
⊗ wrap cast-on (make one stitch using wrap cast-on also known as backward loop cast-on or single cast-on)

⊗ sl1k (slip one stitch knitwise)

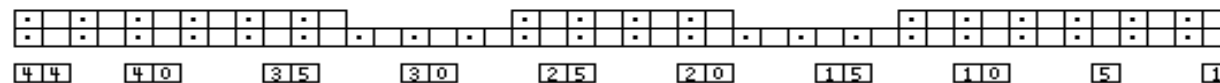
White pompom:



Red hat body - short hat:



White hat band



## Knitting Abbreviations

★	pattern changes from normal—watch out
[ ]	work instructions in square brackets the number of times stated
alt	alternate
approx	approximately
beg	begin/beginning
bet	between
CC	contrast colour
cm	centimetre(s)
cn	cable needle
cont	continue
dec	decrease/decreases/decreasing
dpns	double pointed needles
edge st	knit the first and the last stitch on all rows including purl rows
foll	follow/follows/following
g	gram
inc	increase/increases/increasing
k	knit
k2tog	knit two stitches together
kfb	knit in front and back of stitch to make two stitches from one
kw	knitwise
LH	left hand
m1	make a stitch by picking up the stitch between stitches, twist it and knit into the back of it
MC	main colour
p	purl
p2tog	purl two stitches together
pfb	purl in front and back of stitch to make two stitches from one

pm	place marker
prev	previous
psso	pass slipped stitch(es) over
pw	purlwise
rem	remain/remaining
rep	repeat
RH	right hand
RS	right side(s)
sk	skip
skpo	slip one stitch knitwise, knit one, pass slipped stitch over—one stitch decreased
ssk	slip two stitches one at a time knitwise, insert point of left-hand needle into the fronts of these two stitches and knit them together (this is interchangeable with skpo above)
s2kpo	slip two stitches as if to knit two together, knit one, pass slipped stitches over—two stitches decreased
sk2po	slip one knitwise, knit two together, pass slipped stitch over—two stitches decreased
sl	slip
sl1k	slip one stitch knitwise
sl1p	slip one stitch purlwise
stst	stockingnette stitch—knit right side rows, purl wrong side rows
st(s)	stitch(es)
tbl	through the back of the loop(s)
tog	together
WS	wrong side(s)
yfd	yarn forward
yo	yarn forward and over needle to make a stitch



## Knitting Techniques

### cast-on methods

All knitting begins with a cast-on, which creates loops on the needle. See the following link for numerous types of cast-on methods.

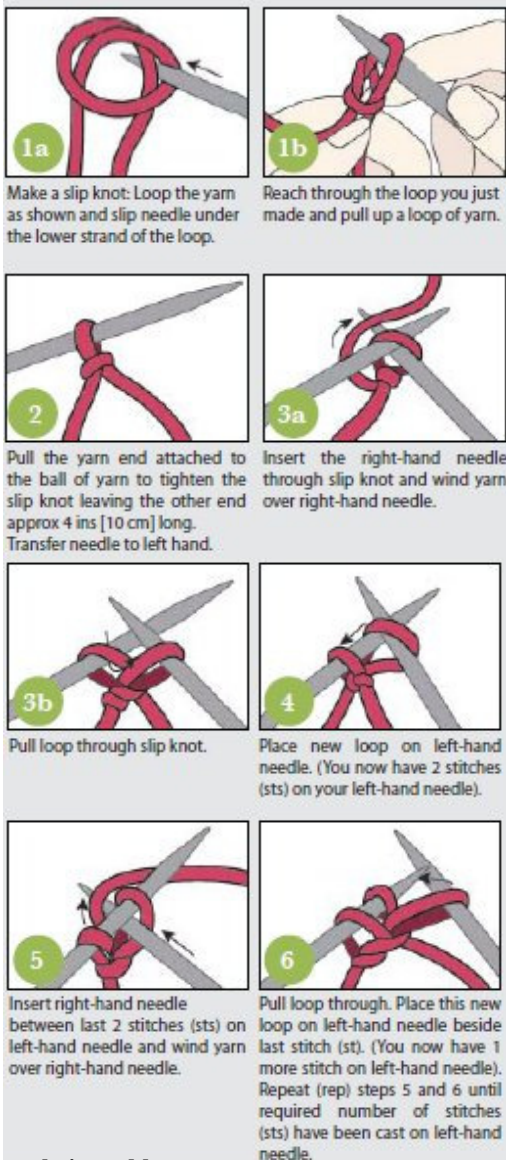
<http://www.knittinghelp.com/videos/cast-on>

### knitwise cable cast-on

A firm, non elastic cast-on. Stay loose, or it can be quite difficult to get the yarn through.

<http://newstitchaday.com/cable-cast-on-knitting/> or

<http://www.knittinghelp.com/videos/cast-on>



### purlwise cable cast-on

Same as the knitwise cable cast-on, but worked on the wrong side of the work, using purl stitch.

<https://www.youtube.com/watch?v=2ZOB888eDtQ>

### alternating cable cast-on

This has a very discreet edge against k1 p1 ribbing. Also a very elastic, easy cast-on method.

<http://newstitchaday.com/alternating-cable-cast-on-knitting/>

<http://www.knittinghelp.com/videos/cast-on>

### wrap cast-on

(aka backward loop cast-on or single cast-on)

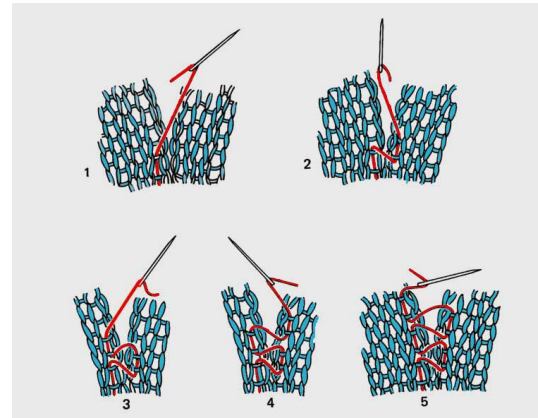
Easiest method to learn, but tricky to knit from evenly.

<http://www.knittinghelp.com/videos/cast-on>

### mattress stitch

Makes an invisible side seam.

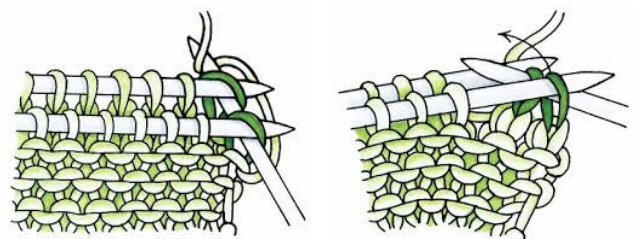
<http://www.knittinghelp.com/videos/knitting-tips>



### three-needle bind-off

Firm method, not invisible, for binding off two pieces together, creating a seam between them. Great for seaming shoulders.

With right sides facing each other, insert the tip of a third needle into the first stitch of one needle, then into the first stitch of the other needle. Knit two stitches together. \*knit the next stitch from each needle together. Pass the previous stitch over this stitch. Repeat from \*. To view a video see



<http://www.knittinghelp.com/videos/knitting-tips>