

# HEART BEAR CARDIGAN - STREAMLINED

**Materials:** 50g double knitting yarn  
3 X 15mm buttons (optional)  
**Needles:** 4mm straights  
4mm set of 4 double pointed needles  
**Notions:** 2 small stitch holders or safety pins  
**Gauge:** 28 stitches, 36 rows = 10cm X 10cm

**Dimensions:** This cardigan will fit a teddy bear approx 30cm tall, with a waist of around 29cms

**Abbreviations and techniques:** see attached sheets

**Note** – When knitting back and forth (not in-the-round on sleeves) odd rows are always RS, even rows are always WS. Do not count cast-on row when counting rows.



## BACK and FRONTS (knit in one piece until arm holes)

Cast on 71 sts  
Use rib cable cast-on method, starting and ending with a knit stitch

### Ribbed band (next 4 rows)

Row 1 (RS) – sl1p, k1, p1, rib until end  
Row 2 (WS) – sl1k, p1, k1, rib until end

### First button-hole

Row 3 (RS) – sl1p, k1, p1, rib until 3 sts rem, yo, k2tog, p1 (71 sts)  
Row 4 – repeat row 2

### Change to stockingette stitch (stst) – [front rib band sts in square brackets]

(next 9 rows before armholes)  
Row 5 – [sl1p, k1, p1, k1, p1] k61 (or k until 5 sts rem) [p1, k1, p1, k1, p1]  
Row 6 – [sl1k, p1, k1, p1, k1] p61 (or p until 5 sts rem) [k1, p1, k1, p1, k1]  
Rows 7 to 13 (next 7 rows) – repeat rows 5 & 6

### Divide for LEFT-FRONT, BACK and RIGHT-FRONT

Row 14 (WS) – [sl1k, p1, k1, p1, k1] p19, place last 6 knitted sts on stitch holder, p29, place last 6 knitted sts on stitch holder, p13 [k1, p1, k1, p1, k1] (18 sts + 23 sts + 18 sts)

### RIGHT-FRONT (arm hole shaping on next two WS rows)

Row 15 (RS) – [sl1p, k1, p1, k1, p1] k13 (18 sts)

Row 16 (WS) – p2tog, p11 [k1, p1, k1, p1, k1] (17 sts)

Row 17 – [sl1p, k1, p1, k1, p1] k12

Row 18 – p2tog, p10 [k1, p1, k1, p1, k1]

(16 sts)

Row 19 – [sl1p, k1, p1, k1, p1] k11

Row 20 – p11 [k1, p1, k1, p1, k1]

Rows 21 to 24 (next 4 rows) – repeat rows 19 and 20

### Neck shaping

Row 25 (RS) – [sl1p, k1, p1, k1, p1] k3, k2tog, k6 (7 sts + 8 sts)

Row 26 – p5, p2tog (6 sts)

Turn and work on armhole edge sts only

Row 27 – k2tog, k4 (5 sts)

Row 28 – p3, p2tog (4 sts)

Row 29 to 31 (next 3 rows) – continue straight in stst

Cut yarn leaving a short tail

### BACK

#### (arm hole shaping next two WS rows)

With RS facing, rejoin yarn at bottom right of BACK, leaving a short tail.

Row 15 (RS) – k (23 sts)

Row 16 (WS) – p2tog, p19, p2tog (21 sts)

Row 17 – k

Row 18 – p2tog, p17, p2tog (19 sts)

Rows 19 to 30 (next 12 rows) – continue straight in stst



### RIGHT Shoulder Seam –

#### Join RIGHT-FRONT to BACK

With RS together, tie RIGHT-FRONT yarn tail to live yarn from BACK  
Join 4 sts from armhole edge on RIGHT-FRONT, to 4 sts from armhole edge on BACK, with a 3 needle bind-off  
Purling sts together with live yarn from BACK. Cut yarn leaving a short tail, and pull through last shoulder st.



You should have 15sts rem on BACK.  
With RS facing, slide these 15 sts onto right-hand needle currently holding 8 sts from RIGHT-FRONT neck edge.

**LEFT-FRONT****(arm hole shaping next two WS rows)**

With RS facing, rejoin yarn at bottom right of LEFT-FRONT, leave a short tail.

**Second button-hole**

Row 15 (RS) – k13 [p1, k1, yo, k2tog, p1]

(18 sts)

Row 16 (WS) – [sl1k, p1, k1, p1, k1] p11, p2tog (17 sts)

Row 17 – k12 [p1, k1, p1, k1, p1]

Row 18 – [sl1k, p1, k1, p1, k1] p10, p2tog (16 sts)

Row 19 – k11 [p1, k1, p1, k1, p1]

Row 20 – [sl1k, p1, k1, p1, k1] p11

Rows 21 to 24 (next 4 rows) – repeat rows 19 and 20

**Neck shaping**

Row 25 – k6, k2tog (7 sts)

Turn and work on armhole edge sts only

Row 26 – p2tog, p5 (6 sts)

Row 27 – k4, k2tog (5 sts)

Row 28 – p2tog, p3 (4 sts)

Row 29 to 30 – continue straight in stst

**LEFT Shoulder Seam –****Join LEFT-FRONT to BACK**

With RS together, join 4 sts from armhole edge on LEFT-FRONT, to 4 sts from armhole edge on BACK, with a 3 needle bind-off.



Purling sts together with live yarn from LEFT-FRONT. Cut yarn leaving a short tail, and pull through last shoulder st.

You should have 11 sts rem on BACK.

With RS facing, slide rem 8 sts from LEFT-FRONT neck edge, from left-hand needle to right-hand needle.

You should now have 27 sts on right-hand needle (8 sts + 11 sts + 8 sts)

**NECKBAND**

With RS facing, rejoin yarn at RIGHT-FRONT neck edge.

Row 1 – [sl1p, k1, p1, k1, p1] k3, pick up 6 sts evenly from RIGHT-FRONT neck edge, k11 sts from BACK, pick up 6 sts evenly from LEFT-FRONT neck edge, k3 [p1, k1, p1, k1, p1] (39 sts)



**Tip 1** – To space neckband sts evenly, pick up 4 sts from each FRONT neck shaping decreases, 1 st from each straight knitting piece, and 1 st from each shoulder seam.

Row 2 – sl1k, p1, k1, rib until end

**Third button-hole**

Row 3 (RS) – sl1p, k1, p1, rib until 3 sts rem, yo, k2tog, p1 (39 sts)

Row 4 – repeat row 2

Row 5 – cast-off all sts in rib

Cut yarn leaving a short tail.

**RIGHT-SLEEVE****(knit-in-the-round on dpns)**

With RS facing, sl 6 underarm sts from stitch holder to first dpn. Rejoin yarn to BACK right armhole tail.

Row 1 – pick up 13 sts evenly from BACK right armhole edge and place on second dpn, pick up 13 sts evenly from RIGHT-FRONT armhole edge and place on third dpn, k6 underarm sts with fourth dpn (32 sts)

**Tip 2** – To space sleeve sts evenly, pick up sts in groups of 3. Pick up 1 st each row, skipping every 4<sup>th</sup> row, and picking up the 13<sup>th</sup> st from the shoulder seam, and the 26<sup>th</sup> st from just before 6 underarm sts.

Rows 2 to 8 (next 7 rows) – continue in stst, knitting every row (32 sts)

**First sleeve shaping**

Row 9 – k13 sts on first dpn, k13 sts on second dpn, k2tog, k2, k2tog (30 sts)

Rows 10 to 16 (next 7 rows) – continue in stst, knitting every row (30 sts)

**Second sleeve shaping**

Row 17 – k13 sts on first dpn, k13 sts on second dpn, k2tog, k2tog (28 sts)

**Tip 3** – You may want to move 1 st from each dpn with 13sts to the underarm dpn with only 2sts. This should stop the underarm sts from slipping off their dpn. (12 sts + 12 sts + 4 sts)

**Ribbed cuff**

Rows 18 to 20 (next 3 rows) – k1, p1 rib each round (28 sts)

Row 21 – cast off all sts in rib

Cut yarn leaving a short tail

**LEFT-SLEEVE**

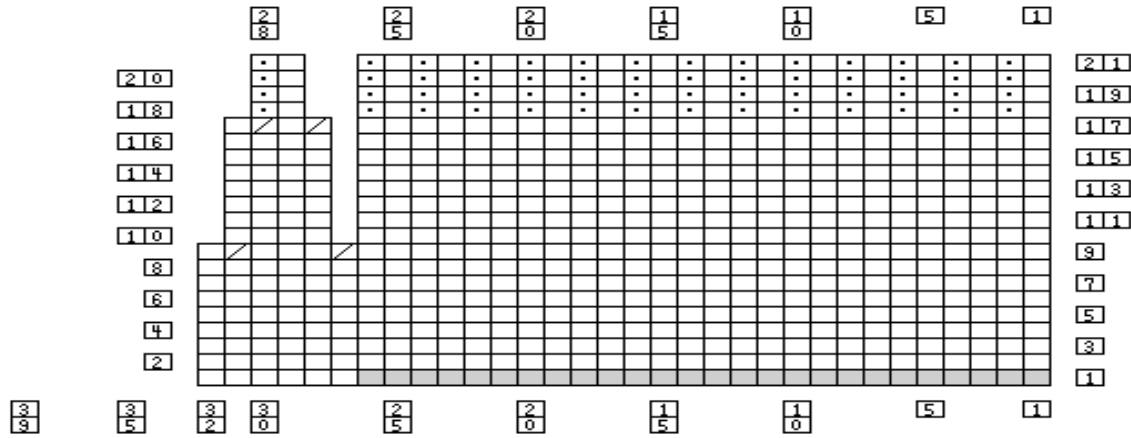
Repeat instructions for RIGHT-SLEEVE, but pick up sts from LEFT-FRONT armhole edge first, then from BACK.

**Finishing**

Sew in all tails. Sew on 3 buttons on RIGHT-FRONT matching button-holes on LEFT-FRONT.

# HEART BEAR CARDIGAN – STREAMLINED

## SLEEVES



## Chart Symbols

- knit on right side (RS) purl on wrong side (WS)
- purl on RS, knit on WS
- yarn over (make a button-hole)
- k2tog (knit 2 stitches together – purl together if on WS row)
- slip 1 stitch knitwise
- slip 1 stitch purlwise
- cast on or picked up stitches

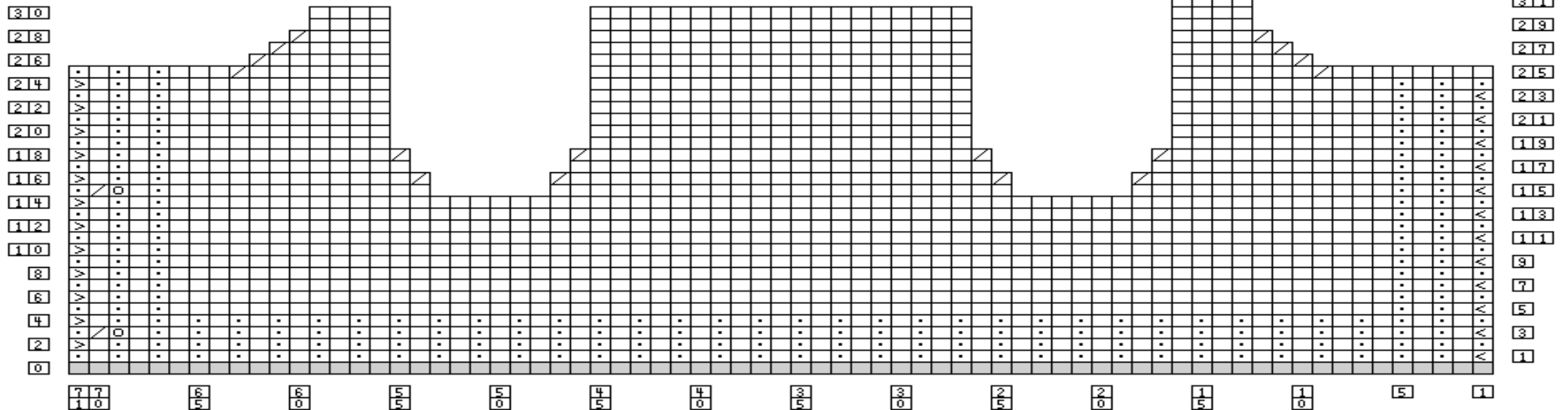
## NECKBAND



## LEFT-FRONT

## BACK

## RIGHT-FRONT



## KNITTING ABBREVIATIONS

★	pattern changes from normal—watch out
[ ]	work instructions in square brackets the number of times stated
alt	alternate
approx	approximately
beg	begin/beginning
bet	between
CC	contrast colour
cm	centimetre(s)
cn	cable needle
cont	continue
dec	decrease/decreases/decreasing
dpns	double pointed needles
edge st	knit the first and the last stitch on all rows including purl rows
foll	follow/follows/following
g	gram
inc	increase/increases/increasing
k	knit
k2tog	knit two stitches together
kfb	knit in front and back of stitch to make two stitches from one
kw	knitwise
LH	left hand
m1	make a stitch by picking up the stitch between stitches, twist it and knit into the back of it
MC	main colour
p	purl
p2tog	purl two stitches together
pfb	purl in front and back of stitch to make two stitches from one
pm	place marker
prev	previous
pssso	pass slipped stitch(es) over

pw	purlwise
rem	remain/remaining
rep	repeat
RH	right hand
RS	right side(s)
sk	skip
skpo	slip one stitch knitwise, knit one, pass slipped stitch over—one stitch decreased
ssk	slip two stitches one at a time knitwise, insert point of left-hand needle into the fronts of these two stitches and knit them together (this is interchangeable with skpo above)
s2kpo	slip two stitches as if to knit two together, knit one, pass slipped stitches over—two stitches decreased
sk2po	slip one knitwise, knit two together, pass slipped stitch over—two stitches decreased
sl	slip
sl1k	slip one stitch knitwise
sl1p	slip one stitch purlwise
stst	stockingnette stitch—knit right side rows, purl wrong side rows
st(s)	stitch(es)
tbl	through the back of the loop(s)
tog	together
WS	wrong side(s)
ybk	yarn back
yfd	yarn forward
yo	yarn forward and over needle to make a stitch

## KNITTING TECHNIQUES

### Cast-on methods

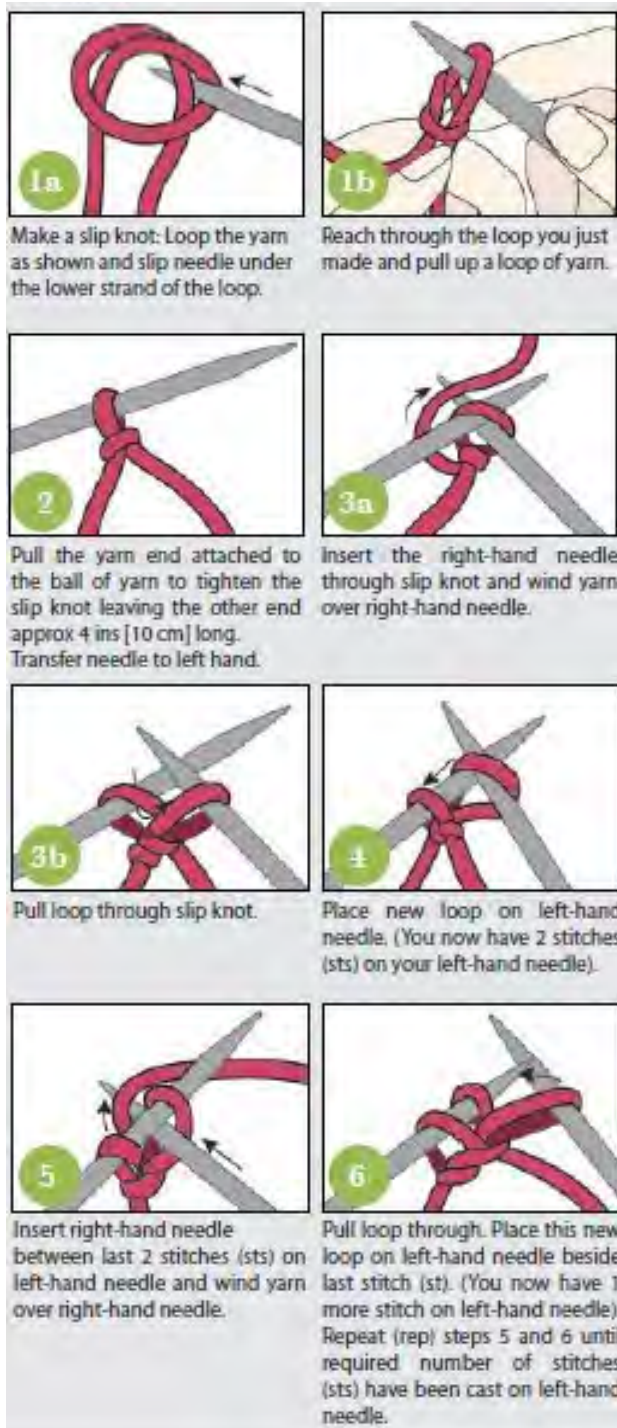
All knitting begins with a cast-on, which creates loops on the needle. See the following link for numerous types of cast-on methods.

<http://www.knittinghelp.com/videos/cast-on>

### Knitwise cable cast-on

A firm, non elastic cast-on. Stay loose, or it can be quite difficult to get the yarn through.

<http://newstitchaday.com/cable-cast-on-knitting/> or  
<http://www.knittinghelp.com/videos/cast-on>



### Purlwise cable cast-on

Same as the knitwise cable cast-on, but worked on the wrong side of the work.

<https://www.youtube.com/watch?v=2ZOB888eDtQ>

### Alternating cable cast-on (AKA cable cast-on in rib)

This has a very discreet edge against k1 p1 ribbing. Also a very elastic, easy cast-on method.

<http://newstitchaday.com/alternating-cable-cast-on-knitting/> or  
<http://www.knittinghelp.com/videos/cast-on>

### Wrap cast-on (AKA backward loop cast-on or single cast-on)

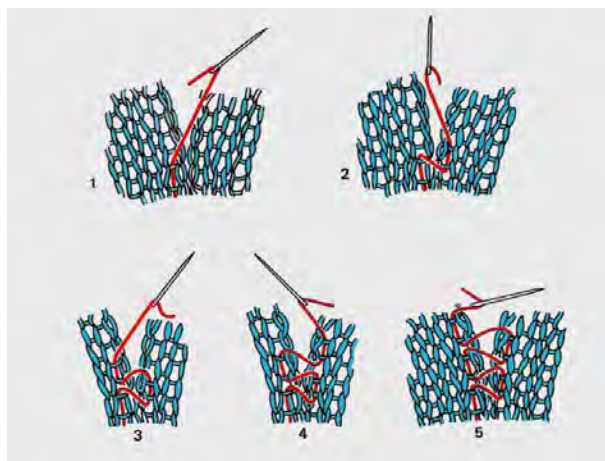
Easiest method to learn, but tricky to knit from evenly.

<http://www.knittinghelp.com/videos/cast-on>

### Mattress stitch

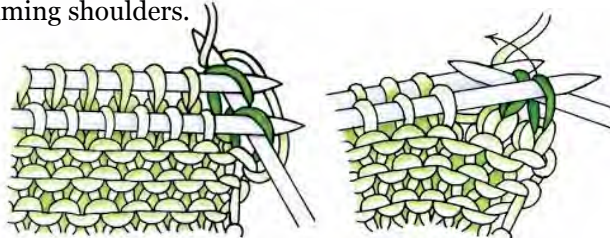
Makes an invisible side seam.

<http://www.knittinghelp.com/videos/knitting-tips>



### Three-needle bind-off

Firm method, not invisible, for binding off two pieces together, creating a seam between them. Great for seaming shoulders.



With right sides facing each other, insert the tip of a third needle into the first stitch of one needle, then into the first stitch of the other needle. Knit two stitches together. \*knit the next stitch from each needle together. Pass the previous stitch over this stitch. Repeat from \*. To view a video see

<http://www.knittinghelp.com/videos/knitting-tips>