

This was designed for the Heart to Heart Bears, sold for the Heart to Heart group in Shanghai China which raises funds for surgeries for Chinese children with congenital heart disease. These directions are free for your personal, individual use. Please do not distribute or reformat them for commercial use, or sell them. Items made from these directions should only be sold if all profits go to charity.



A dress with a single back seam for the Heart to Heart bears. Variations are included to make a different neckline or hemline, add belt loops, give it an empire waist, and to add a button up back.

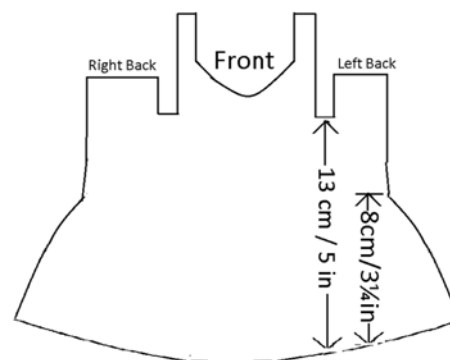
Yarn: DK yarn (UK: 8ply, US: 3-Light) Bamboo or silk works very nicely
Needles: 4mm/US 6 circular or straight (or size to give gauge) plus 1 needle
Gauge: 20sts = 8cm/3in
Notions: Stitch holders



This dress will fit a teddy bear about 25-30cm/10-12in tall with a waist of about 29cm/11½in. See diagram for approximate finished measurements.

ABBREVIATIONS

K..... Knit	SSK.....slip slip knit: slip 1 st knitwise, slip 2 nd st knitwise, insert needle in back and K these 2 sts together
P..... Purl	PSSOPass slipped St over last stitch worked
St. St..... stockinette stitch (K RS row, P WS row)	
YO Yarn Over	
K2tog ... knit 2 sts together	
BO..... Bind Off	
S1..... Slip 1	



Dress is knit in 1 piece from the bottom up.

FRONT:

Cast on 120 sts
 Row 1-3; Work 3 rows in St.St
 Row 4: Next row: K1; **YO, K2tog; Repeat
 from ** until 1 st left, K1

SKIRT:

- Continue in St.St. until piece measures 8cm/3¼in (about 30 rows) from (Row 4: YO) row, ending with a RS row
- Next row: K1, ** K2tog, repeat from ** until 1 st left; K1 (61 sts)
- Next row (WS): P

BEGIN BODICE

Row 1-8: Work in St.St. as follows:
 Odd Rows: K
 Even Rows: P
 Row 9: K13; BO5; K25; BO5; K13

RIGHT BACK (Center back to left armhole):

Row 10: P until 2 left; S1, P1, PSSO
 Row 11: S1 knitwise; K to end
 Row 12: Repeat row 10
 Row 13: S1 knitwise; K to end
 Row 14: P

Row 15-23: Repeat rows 13-14
 Row 24: P6
 Transfer Sts onto holder, cut yarn

FRONT:

Join yarn to WS of center group of Sts.
 Row 10: S1 purlwise, P until 2 Sts left; S1, P1, PSSO
 Row 11: S1 knitwise; K until 2 Sts left; SSK
 Row 12-18 (7 rows): Work in St.St, slipping 1st St:
 Even rows: S1 purlwise; P to end
 Odd rows: S1 knitwise; K to end
 Row 19: S1 knitwise; K8; BO 5; K to end

Right Front Strap

Row 20: S1 St purlwise; P to end
 Row 21: SSK; K to end
 Rows 22-27 (6 rows): Repeat rows 20-21 until 5 Sts remain.
 Rows 28-35 (8 rows): Work in St.St., slipping 1st St of armhole edge as follows:
 Even rows: S1 purlwise; P to end
 Odd rows: K
 Row 36: With right sides together, using 3-needle bind-off, join to last 5 sts of right back.
 Cut yarn.

More Heart to Heart patterns may be found on RAVELRY.COM by searching for 'heart to heart bear'

Left Front Strap

Join yarn to WS of remaining front Sts.

Row 20: P to end

Row 21: S1 knit wise; K until 2 sts left; K2tog

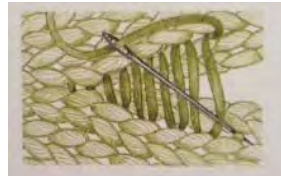
Rows 22-27 (6 rows): Repeat rows 20-21 until 5 Sts remain.

Rows 28-34 (7 rows): Work in St.St., slipping 1st St of armhole edge as follows:

Even rows: S1 purlwise; P to end

Odd rows: K

Transfer Sts to holder; cut yarn, leaving about a 10"/25cm tail (which will be used to join to left back)



Sew up hem, then sew in all loose ends.



Ravelry.com 'Heart to Heart Bear'

LEFT BACK (Left armhole to center back)

Join yarn to WS of final group of sts.

Row 10: S1 purlwise, P to end

Row 11: K until 2 Sts left; SSK

Row 12-13: Repeat rows 10-11

Row 14: S1 purlwise; P to end

Row 15: K

Row 16-24 (9 rows): Work in St.St., slipping 1st St of armhole edge as follows:

Even rows: S1 purlwise; P to end

Odd rows: K

Row 25: K6 (these 6 sts will be the beginning of the neckline). Then with right sides together, using 3-needle bind-off *and long tail yarn from front strap*, join first 5 sts to left front strap.

NECKLINE:

Row 1: Continuing with 6 sts from left back, Pick up about 40 Sts from left shoulder to the right shoulder; K6 sts across right back.

Row 2: K

Row 3: K

Row 4: Bind off

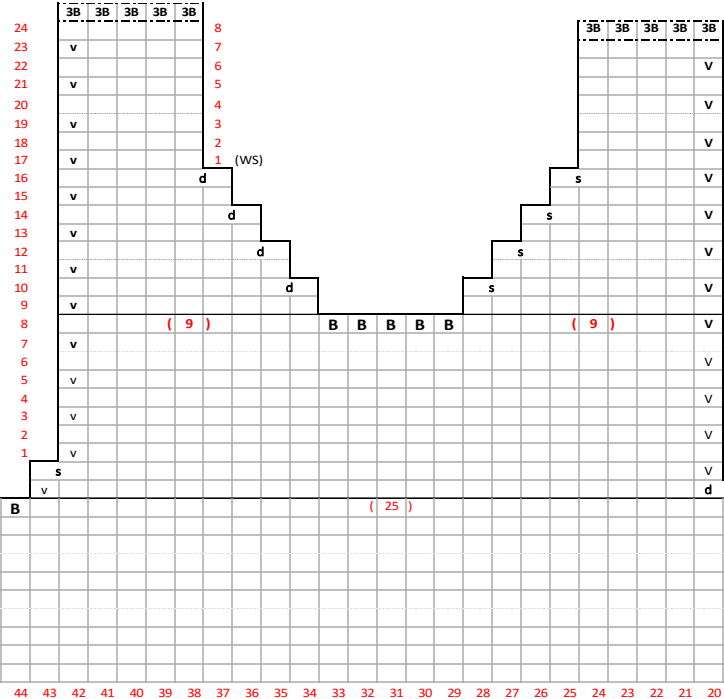
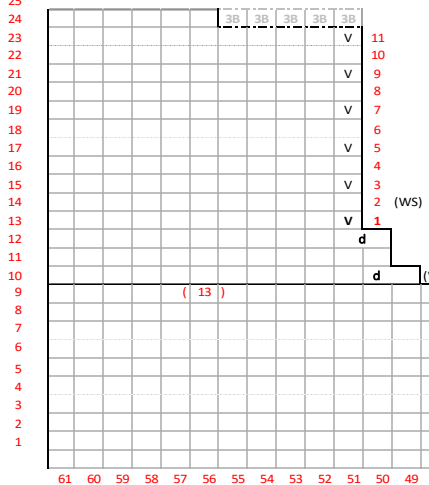
Finishing:

To sew the back seam neatly, from the Right Side, use a darning needle and insert in into the horizontal bar between the first and second stitches, Insert the needle into the corresponding bar on the other side. Continue alternating from side to side.

ONE-PIECE DRESS

- 36 K on RS, P on WS
- 35 I P on RS, K on WS
- 34 V Slip 1 stitch knitwise
- 33 v Slip 1 stitch purlwise
- 32 3B 3-Needle Bind Off
- 31 B Bind off
- 30 d Right-slant decrease (RS: K2tog, WS:S1 P1 PSSO)
- 29 s Left-slant decrease (RS: SSK, WS: P2tog thru back loop)

RIGHT BACK P6 then slip all sts on holder

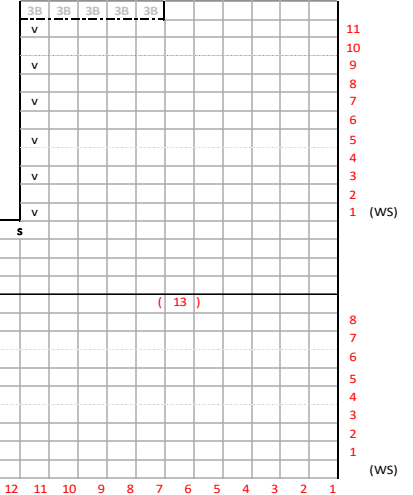


After row 7, cut leaving long tail
Use this long tail to do 3-needle bind off to left back

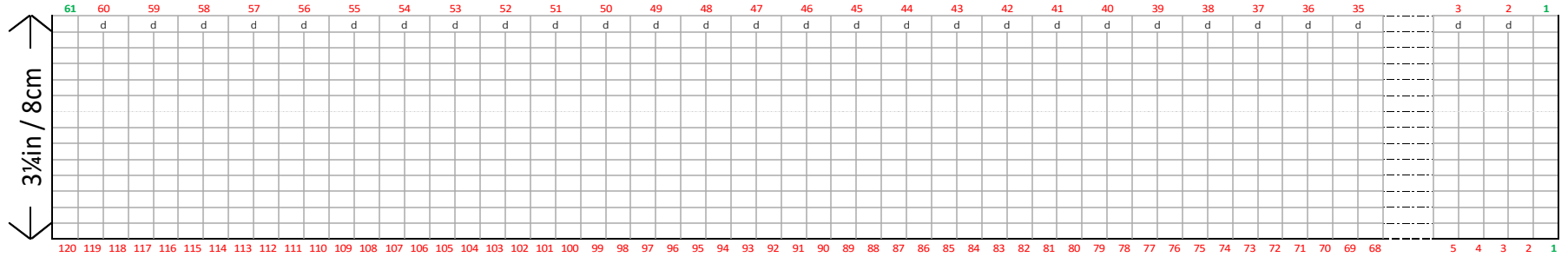
Beginning with sts on back holder,
Pick up sts around front neck, K6 across right back.
Picot: CO1; BO3
Garter: K 2 rows, BO

LEFT BACK

Decrease on K rows (WS)



Skirt will be about 30 rows long
120 to 61: K1, K2tog all around until 1 left; K1



More Heart to Heart patterns may be found on RAVELRY.COM by searching for 'heart to heart bear'

callop Lace

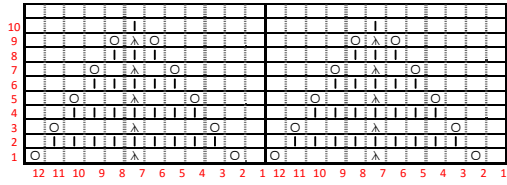
Work skirt above lace in one color, or add a pattern of hearts or Christmas trees.

Cast on 120 (or if you want, 132 for the button-back version) stitches. Decrease as follows:

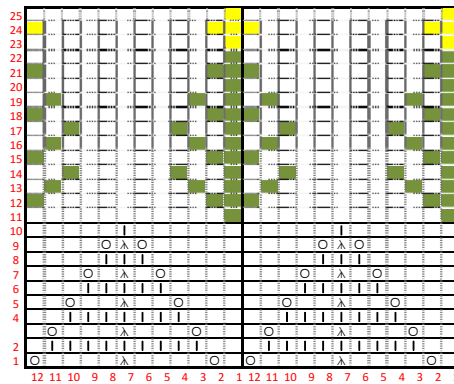
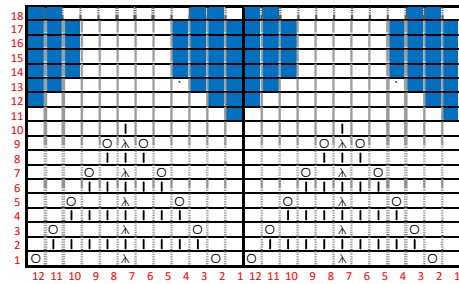
120 to 61: K2tog 29 times, K1, then repeat.

120 to 61: (K2tog 4x, K1) until 4 left; K2tog 2x

132 to 66: K2tog all around



△ Double left decrease(s1, K2tog, pss0)



Wave Crest:

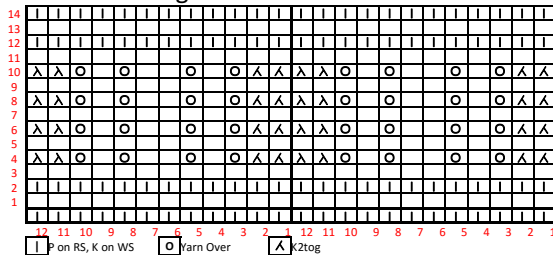
K 1 row, then begin with next row as 'row 1' (RS) of the pattern.

Cast on 120 (or if you want, 132 for the button-back version) stitches. Decrease as follows:

120 to 61: K2tog 29 times, K1, then repeat.

120 to 66: (K2tog 4x, K1) until 4 left; K2tog 2x

132 to 66: K2tog all around



Ridged Feather Stitch

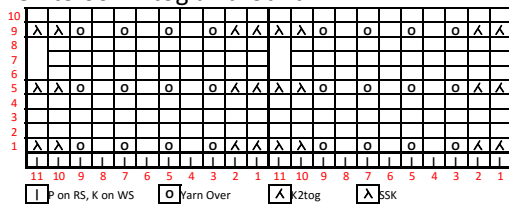
K 1 row, then begin with next row as 'row 1' (RS) of the pattern.

Cast on 121 (or if you want, 132 for the button-back version) stitches. Decrease as follows:

121 to 61: K2tog until 1 left, K1

121 to 61: (K2tog 4x, K1) until 2 left; K2tog 2x

132 to 66: K2tog all around



More Heart to Heart patterns may be found on RAVELRY.COM by searching for 'heart to heart bear'

BUTTON-BACK DRESS

Work skirt until desired length.

Next row: ** K2tog 4 times, K1;
repeat from ** until 4 Sts left,
K2tog, K2tog (66 sts)

Next row: K4, P until end of row;
Cast on 5 (71 Sts)



BEGIN BODICE

Row 1: K
Row 2: K4; P until 4 Sts left; K4
Row 3: K until 4 Sts left; K1; YO; K2tog; K1 (this will make the first buttonhole)
Rows 4-8: (5 rows): Work first and last 4 Sts in garter stitch, and rest of row in St.St. as follows:
Even rows: K4; P until 4 Sts left; K4
Odd rows: K
Row 9: K18; Bind off 5, K25; Bind off 5; K18 to finish row.

Right Back:

Row 10: K4; P until 2 left; S1, P1, PSSO
Row 11: S1 knitwise; K to end
Row 12: Repeat row 10
Row 13: S1 knitwise; K until 4 Sts left; K1; YO; K2tog; K1 (this will make the 2nd buttonhole)
Row 14-22: Work in St.St. with garter stitch buttonhole band as follows:
Even Rows: K4; P to end
Odd Rows: S1 knitwise; K to end

Row 23: S1 knitwise; K until 4 Sts left; K1; YO; K2tog; K1 (this will make the 3rd buttonhole)

Row 24: K4; P until 5 Sts left;
Row 24: P6

Transfer Sts onto holder, cut yarn

Row 17: S1 knitwise; K until 4 Sts left; K1; YO; K2tog; K1 (third buttonhole)

Transfer Sts onto holder, cut yarn

FRONT: Work as indicated in original pattern

LEFT BACK (Left armhole to center back)

Join yarn to WS of final group of sts.

Row 10: S1 purlwise; P until 4 Sts left; K4

Row 11: K until 2 Sts left; SSK

Row 12-13: Repeat rows 10-11

Row 14-24 (11 rows): Work in St.St. with garter stitch button band as follows:

Even Rows: S1 purlwise; P until 4 left; K4

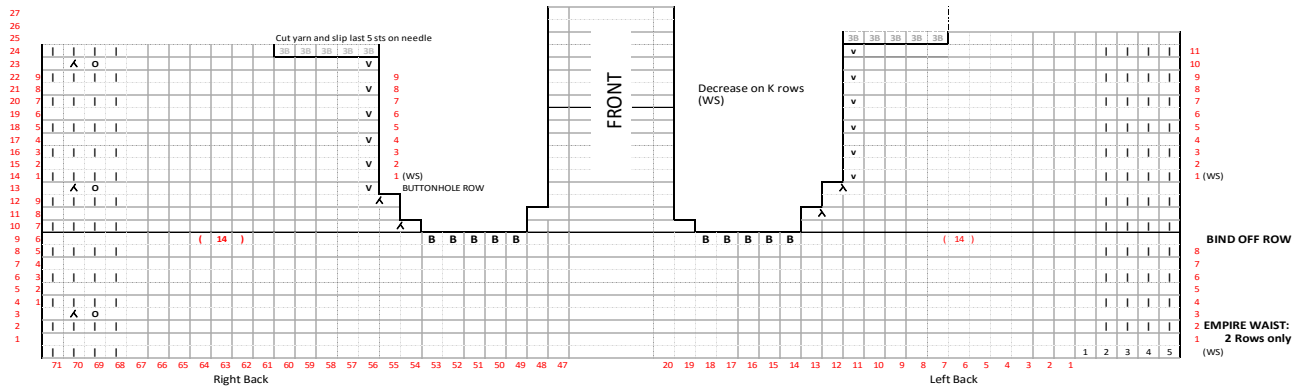
Odd Rows: K

Row 25: K6 (these 6 sts will be the beginning of the neckline). Then with right sides together, using 3-needle bind-off *and long tail yarn from front strap*, join first 5 sts to left front strap.

NECKLINE: Work as indicated in original pattern

FINISHING:

Sew bottom of left button band under bottom of right button band, then sew center back skirt seam.



ALTERNATE NECK SHAPES: Work Front as follows:

V- Neck:

- Row 10: S1 purlwise, P until 2 Sts left; S1, P1, PSSO
- Row 11: S1 knitwise; K until 2 Sts left; SSK
- Row 12: S1 purlwise; P to end
- Row 13: S1 knitwise; K to end
- Row 14: S1 purlwise; P to end
- Row 15: S1 knitwise; K10; BO 1; K to end

Right Front Strap

- Row 16: S1 purlwise; P to end
- Row 17: SSK; K to end
- Rows 18-27 (10 rows): Repeat rows 16-17 until 5 Sts remain.

- Rows 28-35 (8 rows): Work in St.St., slipping 1st St of armhole edge as follows:
Even rows: S1 purlwise; P to end
Odd rows: K

- Row 36: With right sides together, using 3-needle bind-off, join to last 5 sts of right back.

Cut yarn.

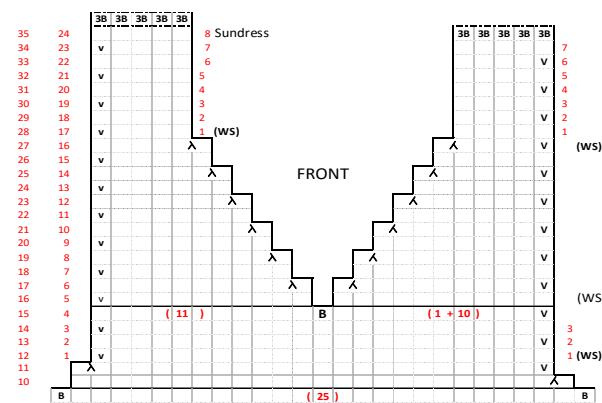
Left Front Strap

- Join yarn to WS of remaining front Sts.
- Row 16: P to end

- Row 17: S1 knit wise; K until 2 sts left; K2tog
- Rows 18-27 (10 rows): Repeat rows 16-17 until 5 Sts remain.

- Rows 28-34 (7 rows): Work in St.St., slipping 1st St of armhole edge as follows:
Even rows: S1 purlwise; P to end
Odd rows: K

Transfer Sts to holder; cut yarn, leaving about a 10"/25cm tail (which will be used to join to left back)



Square Neck:

The square neck version does not need a finished neckline. Bind off neck edge of right and left back as described below:

Right Back:

- Row 24: BO 6; transfer remaining 5 Sts to holder.

Front:

- Row 10: S1 purlwise, P until 2 Sts left; S1, P1, PSSO
- Row 11: S1 knitwise; K until 2 Sts left; SSK
- Row 12-18 (7 rows): Work in St.St, slipping 1st St:
Even rows: S1 purlwise; P to end
Odd rows: S1 knitwise; K to end
- Row 19: S1 knitwise; K5; BO 11; K to end

Right Front Strap

- Row 20: S1 St purlwise; P to end
- Row 21: SSK; K to end
- Rows 22-35 (15 rows): Work in St.St., slipping 1st St of every row as follows:
Even rows: S1 purlwise; P to end
Odd rows: S1 knitwise; K to end

- Row 36: With right sides together, using 3-needle bind-off, join to last 5 sts of right back.

Cut yarn.

Left Front Strap

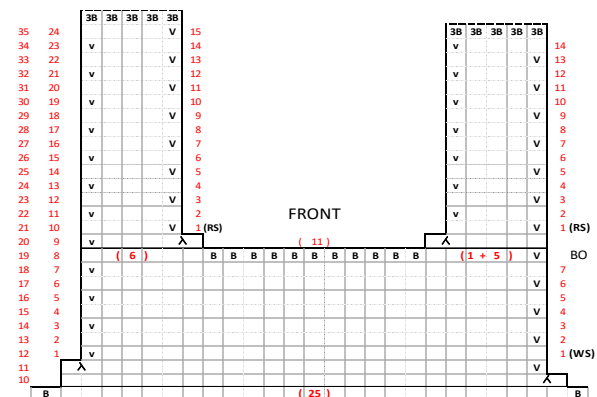
- Join yarn to WS of remaining front Sts.

- Row 20: P2tog, P to end
- Rows 22-34 (14 rows): Work in St.St., slipping 1st St of each row as follows:
Even rows: S1 purlwise; P to end
Odd rows: K

Transfer Sts to holder; cut yarn, leaving about a 10"/25cm tail (which will be used to join to left back)

Left Back:

- Row 25: BO 6. Then with right sides together, using 3-needle bind-off *and long tail yarn from front strap*, join first 5 sts to left front strap.



Picot Neck Edging

Use instead of the garter stitch neck described in the original pattern.

To start, pick up/knit sts along neck edge as described in pattern, then P 1 row.

**

With the RS facing you, cast on 1 st using the cable cast on described here:

- Insert needle between the last 2 sts on the left needle
- Pull a loop through as in making a K st. (First picture)
- Repeat from **

- Slip st from right needle onto the left needle (**2nd picture shows a 2 sts cast on – but only do 1**)
- Bind off 3 sts (K2, bind off right st, K1, bind off right st, K1, bind off right st.)

Slip last St knit onto the left-hand needle. (3rd picture) Repeat from **

NOTE: This can also be used on the armholes, but when making the dress you should not slip the first stitch on the armhole edge – simply K or P. Pick up about 30-38 Sts from each armhole to start.



CIRCULAR KNITTING:

Decrease skirt to 61 Sts and work beginning of bodice as indicated.

Underarm bind-off row: BO5, K25, BO5, K26.

